

AIR POWERED SAW



USER MANUAL



APS-438



APS-438LP
(LOW PROFILE)



APS-438LRC
(LOW RADIAL CLEARANCE)

DISCONNECT POWER SUPPLY BEFORE SERVICING



UNDERSTAND ALL INSTRUCTIONS BEFORE USING

ESCO Tool Guarantee

Guarantee: The manufacturer guarantees its products to be free from defects in material or workmanship for a period of one year from date of shipment from its factory. Said guarantee will not apply if equipment is used in conditions of service for which it is not recommended. The manufacturer is not responsible for damage to its products through improper use, physical damage, poor operating practice, or normal wear.

If any device is found unsatisfactory under the guarantee, the buyer must notify ESCO Tool in writing and after receipt of shipping instructions, buyer must return it directly to ESCO Tool, 75 October Hill Road, Holliston, MA 01746, USA, shipping charges prepaid. Such equipment will be replaced or put in satisfactory operating condition, free of all charges except transportation. The correction of any factory defect by repair or replacement by the manufacturer shall constitute fulfillment of all obligations to the purchaser. Manufacturer's guarantee is void if unauthorized repairs are made to its products.

Manufacturer shall not be liable for consequential damage in case of failure to meet the conditions of any Guarantee or Shipping Schedule, nor will claims for labor, loss of profit, repairs, or other expenses incidental to replacement be allowed.

No other representations, guarantees or warranties, expressed or implied, are made by the manufacturer in connection with the manufacture and sale of its equipment.

Hold Harmless Agreement

Customer agrees to defend, indemnify and hold ESCO Tool, its owners, agents, officers, and/or employees free and harmless from and against any and all claims, liabilities, losses, costs and out of pocket expenses (including attorney's fees) arising out of, or in connection with the ESCO Tool equipment, its use or transportation, or out of operations conducted by customer, its agents, employees, contractors, representatives, guests or invitees, including, but not limited to, active and/or passive negligence.

INSTRUCTION FOR PUTTING IN TO USE	1
UNPACKING.....	1
POWER SUPPLY.....	1
ILLUSTRATED DESCRIPTION OF FUNCTION.....	1
LIMITATION ON AMBIENT CONDITIONS.....	1
LIST OF CONTENTS.....	2
SAFETY PRECAUTIONS	2
PRECAUTIONS AND USE OF PERSONAL PROTECTIVE EQUIPMENT.....	2
SPECIAL SAFETY PRECAUTIONS.....	2
EXPLANATION OF SYMBOLS.....	3
DISCLAIMER.....	3
OPERATING ERGONOMICS.....	3
OPERATING INSTRUCTIONS	3
IDENTIFICATION OF OPERATING CONTROLS AND THEIR USE.....	3
SELECTION OF PROPER TOOLING.....	4
SAW BLADE SELECTION.....	4
ARBOR WHEEL SELECTION.....	4
MEMBRANE WHEEL SELECTION.....	5
MOUNTING ACCESSORY SELECTION.....	5
INSTALLATION OF PROPER TOOLING.....	5
SAW BLADE & MEMBRANE WHEEL INSTALLATION.....	5
TRACK & WELD TAB INSTALLATION.....	5
MOUNTING THE TOOL TO THE WORK.....	6
POWER CONNECTION.....	6
OPERATION OF TOOL.....	7
TOOL LIMITS.....	8
MAINTENANCE AND SERVICING	8
REGULAR CLEANING AND LUBRICATION.....	8
USER SERVICE.....	8
SERVICING BY MANUFACTURER OR AGENT.....	8
QUICK REFERENCE	9
ASSEMBLY DRAWINGS	11
PACKAGING.....	11
GEAR HEADS	
APS-438.....	13
APS-438LP.....	15
APS-438LRC.....	17
TRACK POST.....	19
TROLLEY (LRC).....	20
ARBOR WHEEL SETS.....	21
GUARDS.....	21
MOTOR.....	22
STRAIGHT TRACK.....	23
FLEX TRACK.....	24
ESCO WRAP.....	25
QUICK CLAMP.....	27
TROLLEY (STND & LP).....	28
MEMBRANE BRACKET.....	29
VERTICAL TRACK.....	30

Instructions for putting into use

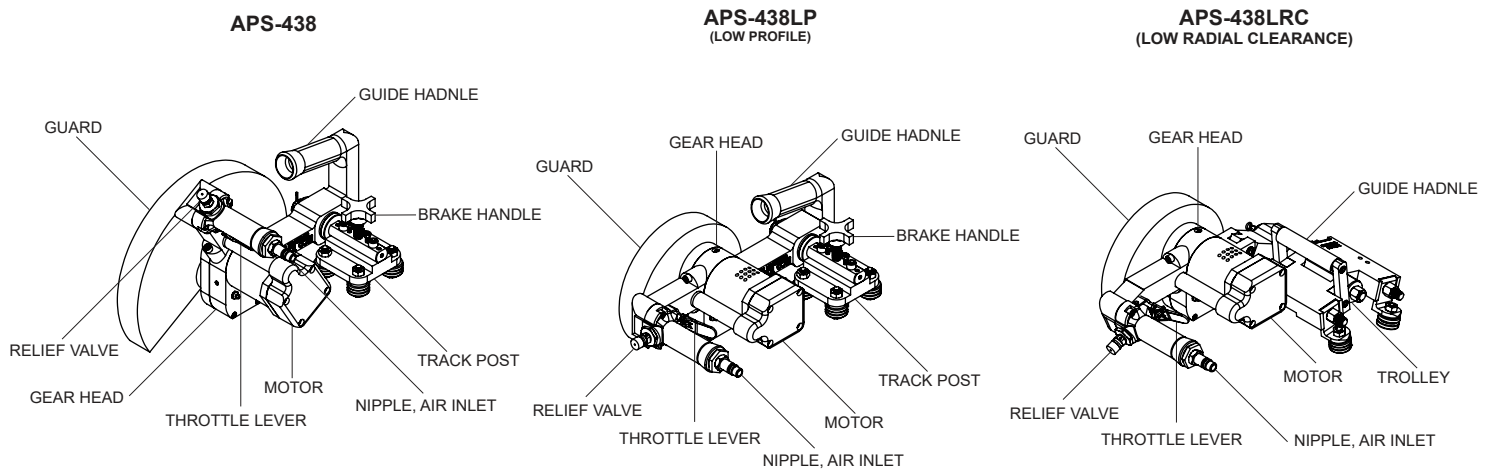
Unpacking

1. Use caution when handling the tool. Cutting blades are sharp. Typically they are protected, however, exposed blades can cause injury.
2. Clean any excess oil, grease or rust preventative from the surface of the tool.

Power supply

1. Recommended air pressure, 90 psi (6.2 bar)
2. Recommended air volume, 80 cfm (2265 lt/min.)
3. Clean moisture free air is essential for trouble free operation.
4. Oil laden operating air should be used. Use a light weight air tool motor oil (s.a.e.10).
5. A hose whip with filter and lubricator is provided with each tool. Be sure air filter is clean and lubricator is full before use.

Illustrated description of function



Limitation on ambient conditions

1. In damp, moist or humid air, extra precaution must be taken in order to provide the tool with moisture free, oil laden air.
2. In temperatures below 32 degrees Fahrenheit (0 Celsius) a lubricant with antifreeze, such as Marvel Air-Tool Oil, must be used.

List of contents

- Gear Head Assembly
- Track Post Assembly or Trolley Assembly
- Arbor Wheel Set
- Guard Assembly
- Motor Assemblies (either pneumatic or electric)
- Air Hose Assembly (not included with electric tools)
- Hand Tool Set
- User Manual
- Case Assembly

Safety precautions

Precautions and use of personal protective equipment

1. Power tools are not insulated for coming into contact with electric power sources.
2. Tool must not be used in an explosive atmosphere.
3. Do not use tool in a manner other than stated. Use other than stated in the instructions is forbidden.
4. For air powered tools, use valved, quick connect couplers to avoid an unrestrained compressed air hose after disconnecting.
5. Use care regarding the drawing in or trapping of long hair, loose clothing, etc.
6. Cover all exposed skin before operating. Cutting blades are sharp and produce hot chips. Both can cause injury.
7. Do not connect power source until tool is securely fastened to the pipe or tube.
8. Use caution when handling, disconnect power source before removing from work, changing blades, performing maintenance or breaking down.
9. Personal protective garments should include but not be limited to...
 - a. Safety glasses
 - b. Work gloves
 - c. Work boots, or shoes
 - d. Protective clothing
 - e. Hearing protection when operator is exposed to long periods of use
10. Have all nearby persons wear safety glasses with side shields.

Special safety precautions

1. Always disconnect power supply before installing or changing cutting blades, securing to pipe or tube, adjusting, moving or breaking machine down.
2. Do not modify or defeat safety devices.
3. Cutting blades are sharp and can cause serious injury. Use caution when handling.
4. Chips can be hot and sharp. Be careful when clearing from tool.
5. Moving and stationary parts can pinch or cause serious injury. Pay extra attention to rotating cutting blades as they cannot be adequately guarded.
6. Saw blade must not be cracked, chipped or warped.
7. During use, machinery may separate, lurch or fall.

Explanation of symbols



Caution (refer to accompanying documents).



Safety glasses must be worn.



Protective gloves, cutting blades and chips can be hot and sharp.



Work boots, or shoes



Protective clothing



Hearing protection



Pinch points

Disclaimer

1. If the equipment is used in a manner not specified by ESCO Tool, the protection provided by the equipment may be impaired.

Operating ergonomics

1. Tool must be mounted at a reasonable working height.
2. Tool may be used in any orientation.
3. Operator must be in a position not to be injured as the machinery may separate, lurch or fall. Operator must have both feet on a stable platform. Reaching or leaning is not acceptable operating ergonomics.

Operating Instructions

Identification of operating controls and their use

(All tools have similar manner controls except as noted.)

Gaurd

- Acts as a barrier between outside objects and saw blades.

Relief valve

- Releases air pressure in excess of 115 psi (7.9 bar).

Gear head

- Houses main gear drive for saw.
- Connects all mechanism to the saw.

Throttle lever

- Locking throttle lever requires deliberate action by the operator to activate the tool.
- Actuating lever starts tool.
- Release of lever stops tool.

Nipple air inlet

- Accepts valved quick connect coupler for connecting air supply.
- Always disconnect air supply before installing, changing or securing blades, adjusting, moving, or breaking down.

Motor

- Provides power to the gear head.
- Pneumatic or electric

Cutting blade (covered by gaurd in diagram)

- Consumable item, available in many sizes and configurations.
- Used to cut through a variety of material.

Track post

- Connects saw to mounting accessories.
- See assesmbly drawings section for reference.

Brake handle

- Stops saw from moving on mounting accessories.
- Rotate to actuate.

Guide handle

- Allows operator to move saw on mounting accessories.

Trolley

- Allows saw to be mounted to ESCO Wrap tracks.
- Trolley is standard on LRC models but is also available for 438 and 438LP.

Selection of proper tooling - Horizontal cutting of walerwall tubes & notching of membrane.**Saw blade selection**

1. Measure the outside diameter of tube.
2. Select a saw blade with enough depth to cut through the tube.
 - a. Abrasive 10" saw blade has a 3-3/8" depth of cut.
 - b. Abrasive 12" saw blade has a 4-3/8" depth of cut.
 - c. Abrasive 14" saw blade has 5-3/8" depth of cut.
 - d. Carbide tip 7-1/4" saw blade has 1-7/8" depth of cut.
 - e. Carbide tip 8-1/4" saw blade has 2-3/8" depth of cut.
3. The most popular abrasive saw blade is 12". It provides good cutting action and blade life on a wide range of tube alloy.
4. 10" Saw blade cuts faster than 12" but wears quicker and has less depth of cut.
5. 14" Saw blade cuts slower than 12", wears slower and has greater depth of cut, it is a good choice for cutting masonry.
6. Carbide tip saw blades cut most material quickly but are easily damaged.

Arbor wheel selection

1. Standard blades - APS-12-01, Carbide blades - APS-12A-01, Membrane wheels - APS-219-01.

Membrane wheel selection

1. See tooling section for specifics on membrane wheels to make your selection.

Mounting accessory selection

1. Mounting accessories come in a variety of configurations. See assembly drawing section for reference in selecting proper mounting accessories for your applications. Saw kit is usually purchased based on application specifications, but additional accessories are available.
2. Straight track for standard waterwall window removal come standard in 5' lengths.
3. Flex track for curved walls come standard in 6' lengths.
4. Membrane bracket used in conjunction with straight track for membrane removal.
5. Quick clamp used in conjunction with straight track for working with smaller sections.
6. Wraps used with saws that have trolleys (LRC or other models with trolley).

Installation of proper tooling

Saw blade & membrane wheel installation

1. Slide saw blade or membrane wheel over driven shaft and locate on rear flange seat.
2. Make sure saw blade sits flat on rear flange surface.
3. Locate front flange over driven shaft (front flange not used with membrane wheel) and thread the flange nut to the driven shaft (left hand thread).
 - a. Make sure the flange nut seats itself on the front flange.
4. Tighten the flange nut using the wrenches provided 17mm x 22mm.
 - a. Left hand thread.
 - b. 17mm fits driven shaft.
 - c. 22mm fits the flange nut.

Track & weld tab installation

1. Two weld tabs are used with the standard five foot track.
2. Bolt the first weld tab approximately one foot from one end of the track.
3. Line the second weld tab cut-line indicator up with the cut-line and tack weld the weld tab to the tube panel or tube membrane.
4. Slide the track onto the second weld tabs threaded stud at the opposite end of the track from the first weld tab and approximately one foot from the end , then thread the nut on and tighten the nut (9/16" wrench).
5. Be sure the cut-line indicator is 90 degrees off the track and aligns with the cut-line, then weld into place.
6. Securely tighten weld tab nut.
7. When done horizontally cutting the tubes, notching the membrane and end prepping the tube if, using a HHB-5000 or HHB-10000 High speed end prep tool, remove the track from weld tabs and pry the weld tabs free.
8. Weld tabs can be used numerous times so clean off excess weld material.

Mounting the tool to the work

1. Make sure track is securely attached to weld tabs.
 - a. Slide the saw onto the track.
 - b. Make sure the saw blade aligns with cut-line indicators.
 - c. Saw should roll smoothly on track.
2. Membrane bracket installation onto track
 - a. Slide the membrane bracket onto the track.
 - b. Slide the APS Saw onto the membrane bracket.
 - c. Locate membrane wheel slightly ahead of center over the membrane to be cut.
 - d. Lock the membrane bracket to the track by turning the star wheel on the membrane bracket and engaging the brake with the membrane bracket track.
 - e. Lock the saw to the membrane bracket by turning the star wheel on the APS-438 saw and engaging the brake with track.
3. Quick clamp installation to track
 - a. Attach wedge with tightening handle so tightening handle can be turned freely when attached to track.
 - b. Lay track on panel and line clamp stop with bolt holes so clamp stop tucks under tubes when bolted to track.
 - c. Turn tightening handle to secure track to the tube panel.
 - d. Track leveler keeps track flush with panel on panels over six feet (approx. two meters in length).
4. Flex track installation
 - a. Attach cut-line indicator to flex track.
 - b. Loosen the shape retaining nuts and press flex track to surface it.
 - c. Align cut-line indicators with cut-line.
 - d. Tack weld the flex track to the surface that is going to be cut.
5. Wrap track installation to pipe
 - a. Wrap tracks are pipe size specific.
 - b. Attach the cut-line indicator to wrap track.
 - c. Open wrap track and put it around the pipe.
 - d. Close the wrap track and engage the round end of the securing toggle with its mating receptor.
 - e. Engage the two wrap track ends so they slip together.
 - f. Align the cut-line indicator with the cut line.
 - g. Swing the toggle lever to the closed position.

Power connection

1. Use only the air hose supplied with the tool.
2. This hose has a valved quick connect coupler which will hold back all air that is in the supply hose.
 - a. This feature allows the air supply to be safely removed from the tool at any time.
3. Connect the air supply.
4. Relief valve
 - a. the relief valve (located on throttle handle) will open and release air in excess of 115 psi (7.9 bar). normal operating pressure is 90psi.
 - b. This valve is a safety device to prevent excessive motor speed. Do not tamper with.

Operation of saw

Horizontal operation on straight track, flex track and quick clamp.

1. Engage the throttle lever
2. Move the saw back and forth along the track with the saw blade contacting the boiler tube panel to establish a cut-line.
3. Plunge the saw blade into the boiler tube panel approximately $\frac{1}{4}$ to $\frac{3}{4}$ of the boiler tube panel thickness and then pull it out.
4. Continue doing this for the length of the track.
5. Finish the cut by contacting the saw blade with the boiler tube panel while moving it back and forth until the saw blade fully penetrates the panel.
 - a. Moving the saw blade back and forth helps prevent;
 - i. The saw blade from loading-up and overheating which slows the cutting action.
 - ii. Saw blade drift.
6. Disconnect air supply before removing saw from track, changing saw blades or servicing.

Vertical operation on straight track, flex track and quick clamp.

1. Be sure track stop is in the down position
2. Turn star wheel to engage brake.
3. Plunge saw blade into the boiler tube panel or membrane.
4. Loosen brake slightly to move saw up and down on track with the saw blade contacting the cutting surface to establish a cut-line.
5. Finish the cut by plunging the saw blade into the boiler tube panel or membrane while moving the saw up and down.
 - a. Moving the saw blade up and down helps prevent;
 - i. The saw blade from loading-up and overheating which slows the cutting action.
 - ii. Saw blade drift.
6. Always disconnect air supply before installing, changing or securing the tool to the track and when changing the saw blade.

Membrane bracket operation

1. Engage the saw and membrane bracket brakes, using the star wheel.
2. Lift membrane blade so it is not in contact with surface to be cut.
3. Engage throttle lever
4. With membrane blade spinning touch it to the boiler tube panel membrane aggressively.
 - a. Aggressively using the membrane blade keeps it free cutting and helps prevent it from loading-up.
5. Periodically lift the membrane blade off the membrane being cut and then repeat step 3 above.
6. Always disconnect air supply before installing, changing or securing the tool to the track and when changing the saw blade.

Saw on wrap track operation

1. Engage throttle lever.
2. With the saw blade spinning touch it to the pipe and rotate the saw around the pipe circumference.
 - a. The beginning and the end of the cut must meet.
 - b. If they do not meet the wrap track has slipped and needs to be tightened.

3. Plunge the saw into the pipe while moving it back and forth and cut the pipe approximately $\frac{1}{4}$ to $\frac{3}{4}$ through the pipe wall thickness and then pull it out.
 - a. Continue doing this for the length of the track.
4. Finish the cut by contacting the saw blade with the pipe while moving the saw back and forth until the saw blade fully penetrates the pipe. Continue this action until the pipe is completely cut.
5. Always disconnect air supply before installing, changing or securing the tool to the track and when changing the saw blade.

Tool limits

1. Abrasive 10" saw blade has a 3-3/8" depth of cut.
2. Abrasive 12" saw blade has a 4-3/8" depth of cut.
3. Abrasive 14" saw blade has 5-3/8" depth of cut.
4. Carbide tip 7-1/4" saw blade has 1-7/8" depth of cut.
5. Carbide tip 8-1/4" saw blade has 2-3/8" depth of cut.

Maintenance and servicing

Regular cleaning and lubrication

1. Hose whip, filter and lubricator
 - a. Inspect filter element by removing nut from end of filter assembly.
 - b. If the filter is dirty or plugged, replace it using filter repair kit.
 - c. Remove filler plug from lubricator and be sure the adjusting screw is set half way between open and closed.
 - d. Fill lubricator, use a light weight air tool motor oil (s.a.e. 10).
 - e. For electric tools, inspect the cord for damage. If any damage is noted, the cord should be replaced.
2. Gear housing grease
 - a. Grease gear head after every two hundred hours of use.
 - b. Use grease NLGI # 2.
3. Lubrication for storage
 - a. Before putting the tool away, fill air inlet with a liberal amount of air tool oil and actuate motor momentarily. This will distribute oil to internal motor parts, preventing rust build up.
 - b. Wipe tool down using soft cloth removing all dirt, grease, oil and chips.
 - c. Lightly coat tool with rust preventive.

User service

1. A qualified air tool technician can provide all service for this machine.
 - a. Factory service or assistance is always available, contact us at the numbers below.
 - b. Complete drawings and parts lists are provided in section six.
 - i. No special tools are required to perform complete service.

Servicing by manufacturer or agent

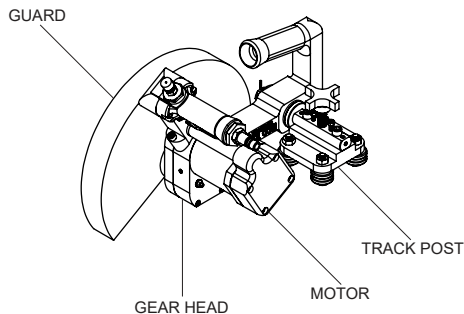
1. Factory service, return the tool to the Factory address listed below.
2. Agent service, if applicable return tool to the Agent listed below.
 - a. If unsure of Agent contact the factory.

ASSOCIATED PARTS

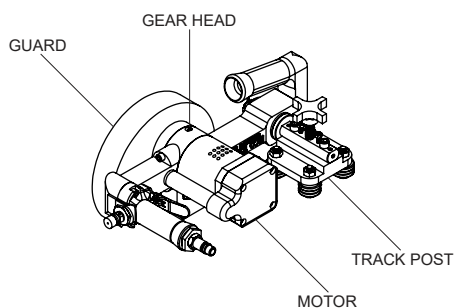
BLADES: *APS ABRASIVE & CARBIDE WHEELS*
 LOCATING METHOD: *TRACK MOUNTS AND ESCO WRAPS*
 DRIVE OPTIONS: *PNEUMATIC*

COMPONENT IDENTIFICATION

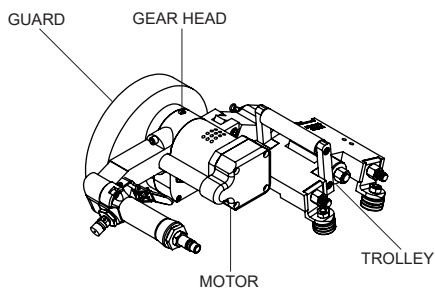
APS-438



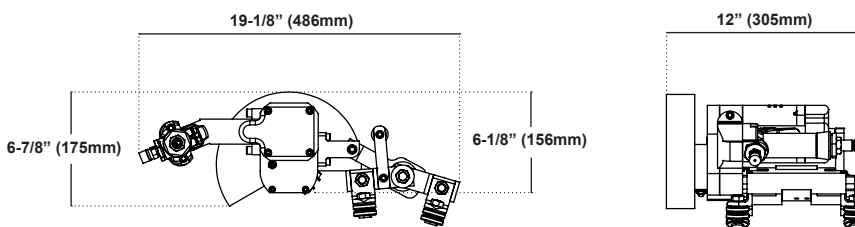
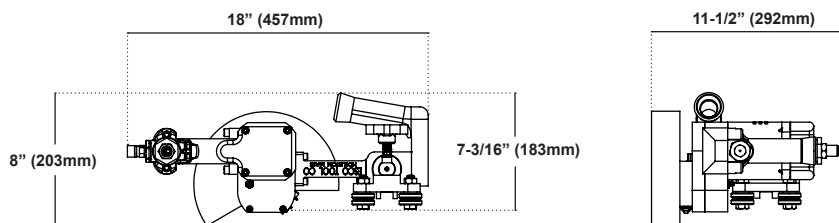
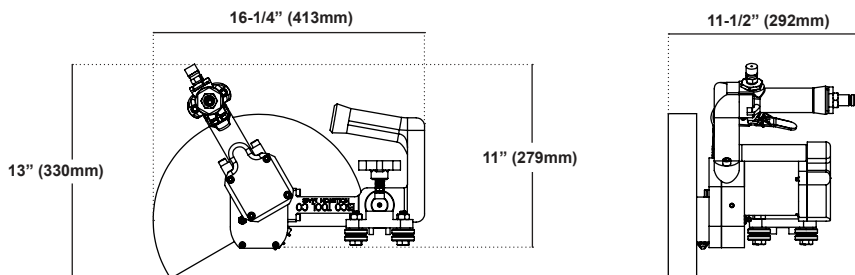
**APS-438LP
(LOW PROFILE)**



**APS-438LRC
(LOW RADIAL CLEARANCE)**



DIMENSIONS



POWER SPECS

	ALL MODELS
POWER OUTPUT	3.0 HP
POWER DRAW	90 PSI
VOLUME	80 CFM
POWER OUTPUT	2207 W
POWER DRAW	6.2 BAR
VOLUME	2265 LT/MIN
BLADE SPEED	5,050 RPM

HANDLING SPECS

	ALL MODELS
WORK WEIGHT (lb)	30
SHIP WEIGHT (lb)	70
SHIP DIMS (in)	11 X 15 X 27
WORK WEIGHT (kg)	13.6
SHIP WEIGHT (kg)	31.8
SHIP DIMS (mm)	254 X 381 X 686

This page has been intentionally left blank

PACKAGING ASSEMBLIES

PART #: CC06-APS-01
DESCRIPTION: CASE ASM, APS

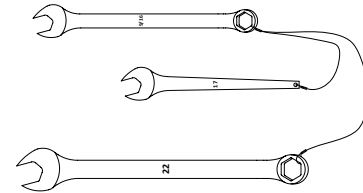
ITEM #	QTY	PART #	DESCRIPTION
1	1	CC06	CASE, CC06
2	1	FP-CC06-01	FOAM, APS
4	1	MLB.02	LBL, MILLHOG
5	1	FLB.01	LBL, FLAG

HAND TOOL SETS

APS-438 & APS-438LP

PART #: 299-1722-36
DESCRIPTION: WRENCH SET (17 X 22 X 9/16)

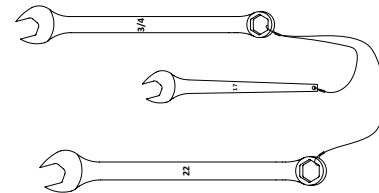
ITEM #	QTY	PART #	DESCRIPTION
	1	293-3636	CW (9/16 X 9/16)
	1	290-0017	OEW (17)
	1	294-2222	CW (22 X 22)



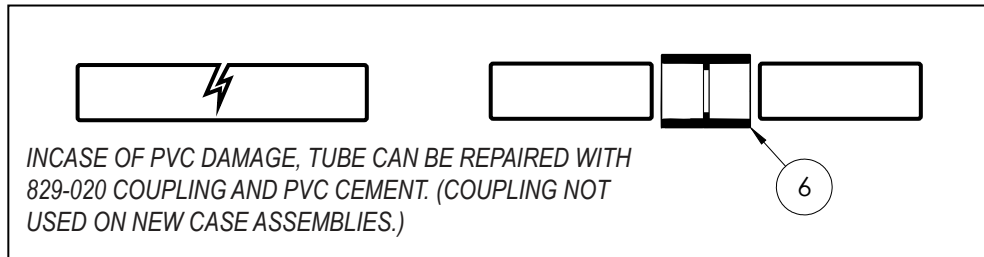
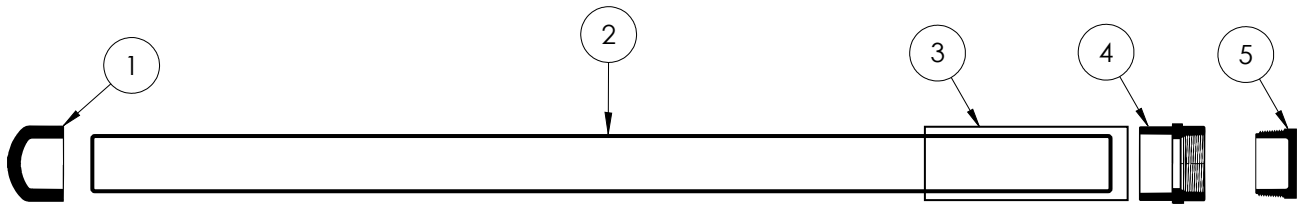
APS-438LRC

PART #: 299-1722-48
DESCRIPTION: WRENCH SET (17 X 22 X 3/4)

ITEM #	QTY	PART #	DESCRIPTION
	1	293-4848	CW (3/4 X 3/4)
	1	290-0017	OEW (17)
	1	294-2222	CW (22 X 22)



TRACK CASE ASSEMBLIES



NOTE: TO OPEN THIS CASE, CAREFULLY CUT THROUGH RUBBER HEAT SHRINK THAT SURROUNDS ITEM #5 AND UNSCREW THE PLUG. ALL SLIP-FIT FITTINGS ARE ATTACHED WITH PVC CEMENT.

STRAIGHT TRACK

PART #: CC-020-05

DESCRIPTION: CASE ASM, TRACK (2 X 60)

ITEM #	QTY	PART #	DESCRIPTION
1	1	847-020	PVC CAP (2 X S80)
2	5	828-020	PVC PIPE (2 X S80)
3	1	HS-212	HEAT SHRINK, 2-1/2
4	1	835-020	TH'D ADAPTER (2 X S80)
5	1	850-020	TH'D PLUG (2 X S80)
6	0	829-020	COUPLER (2 X S80)

NOTE: ITEM # 2 QUANTITY IS IN FEET. FOR CUSTOM LENGTH TRACK, THIS QUANTITY MAY CHANGE.

FLEX TRACK

PART #: CC-025-06

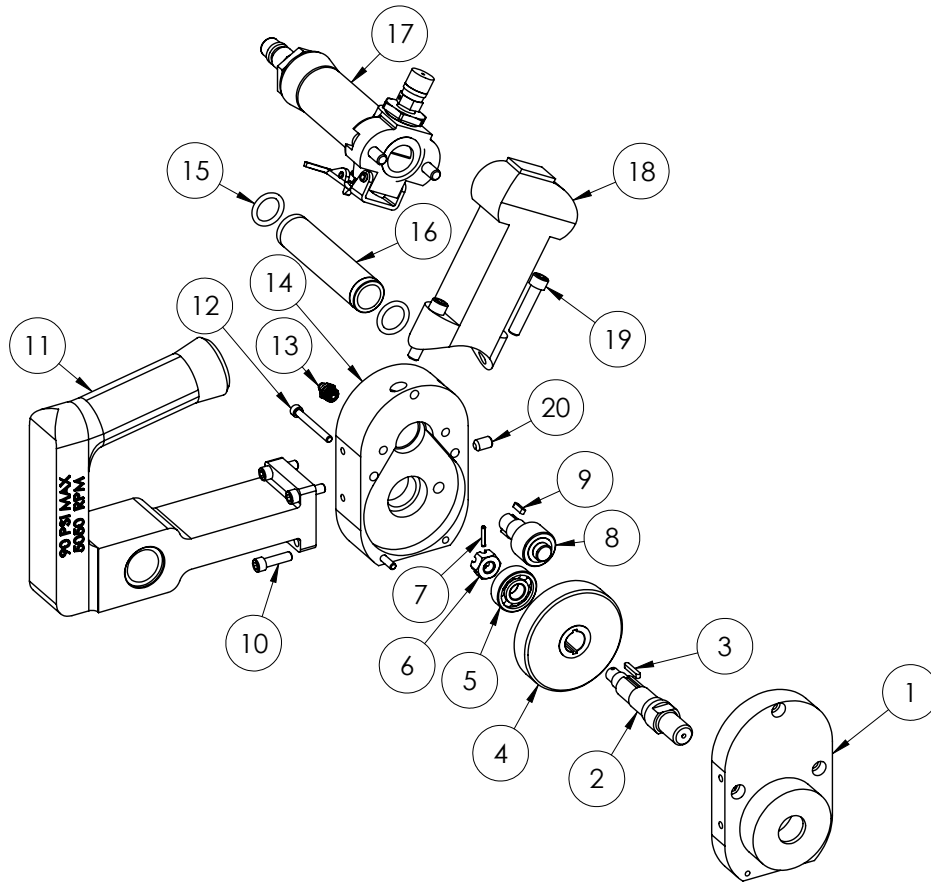
DESCRIPTION: CASE ASM, TRACK (2-1/2 X 72)

ITEM #	QTY	PART #	DESCRIPTION
1	1	847-025	PVC CAP (2-1/2 X S80)
2	6	828-025	PVC PIPE (2-1/2 X S80)
3	1	HS-300	HEAT SHRINK, 3
4	1	835-025	TH'D ADAPTER (2-1/2 X S80)
5	1	850-025	TH'D PLUG (2-1/2 X S80)
6	0	829-025	COUPLER (2-1/2 X S80)

NOTE: ITEM # 2 QUANTITY IS IN FEET. FOR CUSTOM LENGTH TRACK, THIS QUANTITY MAY CHANGE.

PART #: APS-201-01

DESCRIPTION: GEAR HEAD ASM, APS-438



ITEM #	QTY	PART #	DESCRIPTION
1*	1	APS-10-01	FRONT HOUSING ASM
2	1	APS-09	DRIVEN SHAFT
3	2	50-10	KEY
4	1	APS-05	GEAR
5	1	311-014	BALL BEARING
6	1	177-025	CASTLE NUT (3/8-24)
7	1	134-4210	SSP (3/32 X 5/8)
8	1	APS-19	GEAR & SHAFT
9	2	50-23	KEY
10	4	110-2014	SHCS (1/4-20 X 7/8)
11*	1	APS-39-01	GUIDE HANDLE ASM
12	2	110-1628	SHCS (10-24 X 1-3/4)
13	1	50-01	GREASE FITTING
14	1	APS-02	LOWER HOUSING
15	2	230-210	O-RING
16	1	APS-62	AIR TUBE
17*	1	APS-32	THROTTLE HANDLE ASM
18	1	APS-34	THROTTLE ADAPTER
19	2	110-2224	SHCS (5/16-18 X 1-1/2)
20	1	130-2208	SHSS (5/16-18 X 1/2)

PART #: APS-201-01

DESCRIPTION: GEAR HEAD ASM, APS-438

* **PART #: APS-10-01**
DESCRIPTION: FRONT HOUSING ASM

ITEM #	QTY	PART #	DESCRIPTION
1	1	APS-10	FRONT HOUSING
2	2	133-4812	DP (1/4 X 3/4)

* **PART #: APS-39-01**
DESCRIPTION: GUIDE HANDLE ASM

ITEM #	QTY	PART #	DESCRIPTION
1	4	110-2014	SHCS (1/4-20 X 7/8)
2	1	APS-39	GUIDE HANDLE

* **PART #: APS-32**
DESCRIPTION: THROTTLE HANDLE ASM

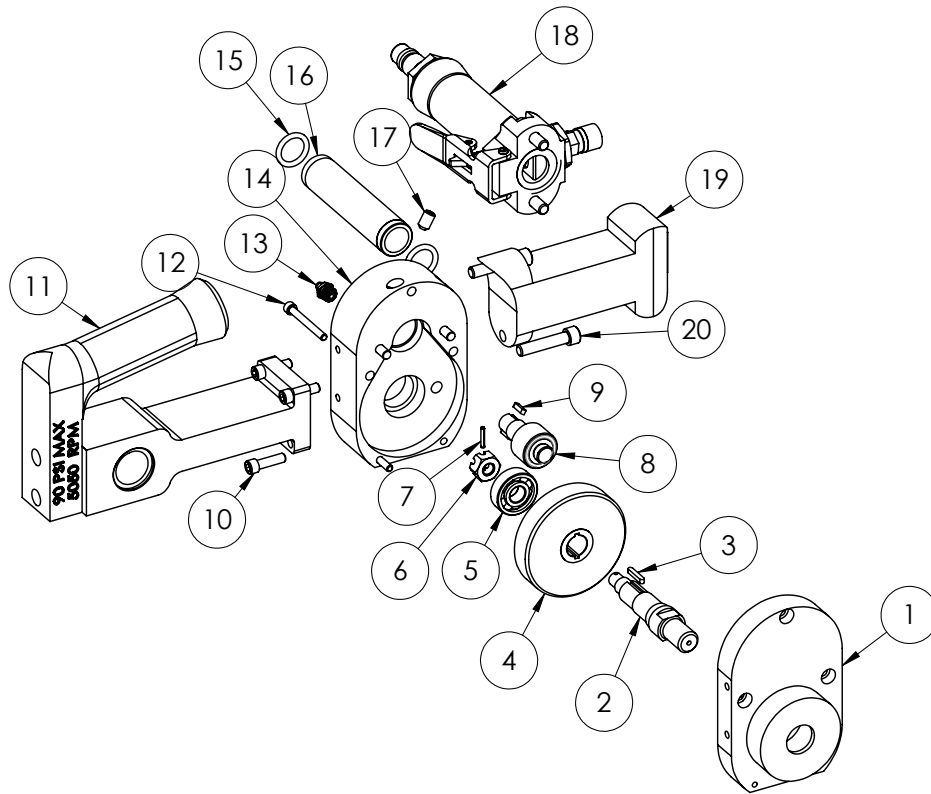
ITEM #	QTY	PART #	DESCRIPTION
1	1	APS-32_PART	THROTTLE HANDLE
2*	1	APS-21	THROTTLE LEVER ASM
3	1	APS-31A	BUSHING
4	1	APS-31	VALVE STEM
5	1	APS-30	VALVE
6	1	230-218	O-RING
7	1	230-117	O-RING
8	1	230-122	O-RING
9	1	APS-26	RELIEF VALVE
10	1	APS-27	VALVE CAP
11	1	APS-29	SPRING
12	2	110-2216	SHCS (5/16-18 X 1)
13	1	APS-25	INLET ADAPTER
14	1	355-5252	NIPPLE (1/2 X 1/2 NPT)

* **PART #: APS-21**
DESCRIPTION: THROTTLE LEVER ASM

ITEM #	QTY	PART #	DESCRIPTION
1	1	APS-21A	THROTTLE LEVER
2	1	134-4824	SSP (1/4 X 1-1/2)
3	1	APS-21C	SPRING
4	1	134-4618	SSP (3/16 X 1-1/8)
5	1	APS-21D	SAFETY PAWL

PART #: APS-201-02

DESCRIPTION: GEAR HEAD ASM, APS-438LP



ITEM #	QTY	PART #	DESCRIPTION
1*	1	APS-10-01	FRONT HOUSING ASM
2	1	APS-09	DRIVEN SHAFT
3	2	50-10	KEY
4	1	APS-05	GEAR
5	1	311-014	BALL BEARING
6	1	177-025	CASTLE NUT (3/8-24)
7	1	134-4210	SSP (3/32 X 5/8)
8	1	APS-19	GEAR & SHAFT
9	2	50-23	KEY
10	4	110-2014	SHCS (1/4-20 X 7/8)
11*	1	APS-39LP-01	GUIDE HANDLE ASM (LP)
12	2	110-1628	SHCS (10-24 X 1-3/4)
13	1	50-01	GREASE FITTING
14	1	APS-02	LOWER HOUSING
15	2	230-210	O-RING
16	1	APS-62	AIR TUBE
17	1	130-2208	SHSS (5/16-18 X 1/2)
18*	1	APS-32	THROTTLE HANDLE ASM
19	1	APS-34	THROTTLE ADAPTER
20	2	110-2224	SHCS (5/16-18 X 1-1/2)

PART #: APS-201-02

DESCRIPTION: GEAR HEAD ASM, APS-438LP

* **PART #: APS-10-01**
DESCRIPTION: FRONT HOUSING ASM

ITEM #	QTY	PART #	DESCRIPTION
1	1	APS-10	FRONT HOUSING
2	2	133-4812	DP (1/4 X 3/4)

* **PART #: APS-39LP-01**
DESCRIPTION: GUIDE HANDLE ASM (LP)

ITEM #	QTY	PART #	DESCRIPTION
1	2	110-2220	SHCS (5/16-18 X 1-1/4)
2	1	APS-77	HANDLE, LP
3	4	110-2014	SHCS (1/4-20 X 7/8)
4	1	APS-39LP	GUIDE HANDLE, LP

* **PART #: APS-32**
DESCRIPTION: THROTTLE HANDLE ASM

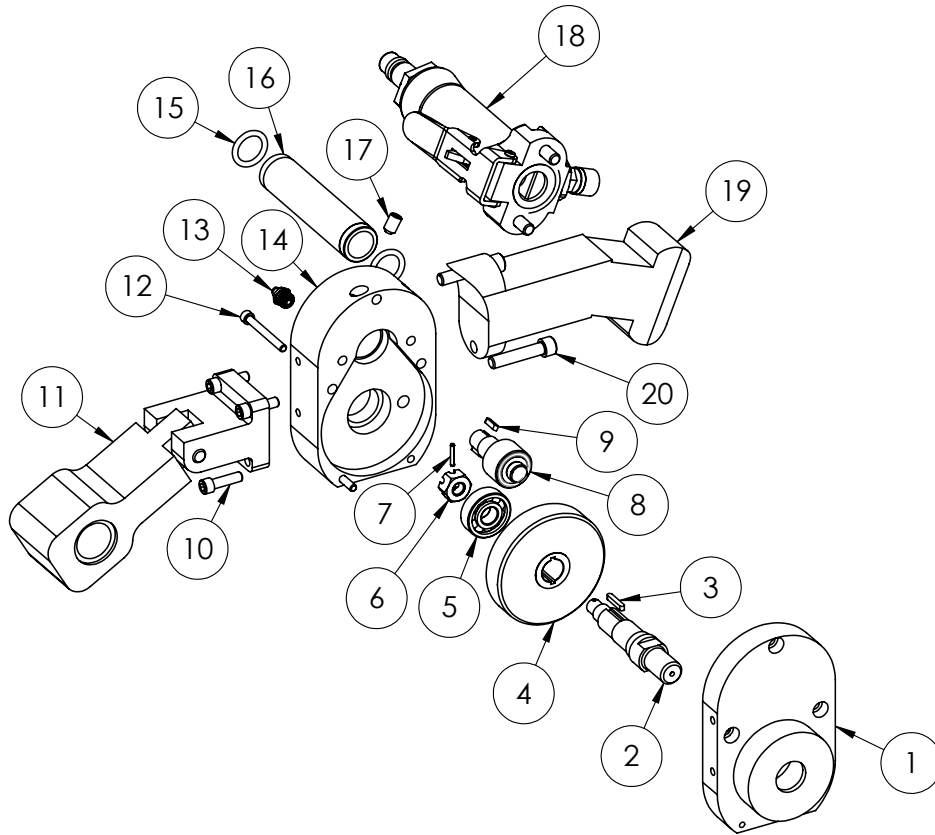
ITEM #	QTY	PART #	DESCRIPTION
1	1	APS-32_PART	THROTTLE HANDLE
2*	1	APS-21	THROTTLE LEVER ASM
3	1	APS-31A	BUSHING
4	1	APS-31	VALVE STEM
5	1	APS-30	VALVE
6	1	230-218	O-RING
7	1	230-117	O-RING
8	1	230-122	O-RING
9	1	APS-26	RELIEF VALVE
10	1	APS-27	VALVE CAP
11	1	APS-29	SPRING
12	2	110-2216	SHCS (5/16-18 X 1)
13	1	APS-25	INLET ADAPTER
14	1	355-5252	NIPPLE (1/2 X 1/2 NPT)

* **PART #: APS-21**
DESCRIPTION: THROTTLE LEVER ASM

ITEM #	QTY	PART #	DESCRIPTION
1	1	APS-21A	THROTTLE LEVER
2	1	134-4824	SSP (1/4 X 1-1/2)
3	1	APS-21C	SPRING
4	1	134-4618	SSP (3/16 X 1-1/8)
5	1	APS-21D	SAFETY PAWL

PART #: APS-201-03

DESCRIPTION: GEAR HEAD ASM, APS-438LRC



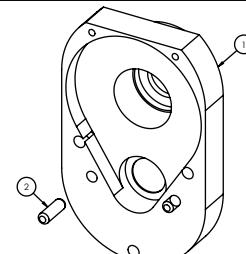
ITEM #	QTY	PART #	DESCRIPTION
1*	1	APS-10-01	FRONT HOUSING ASM
2	1	APS-09	DRIVEN SHAFT
3	2	50-10	KEY
4	1	APS-05	GEAR
5	1	311-014	BALL BEARING
6	1	177-025	CASTLE NUT (3/8-24)
7	1	134-4210	SSP (3/32 X 5/8)
8	1	APS-19	GEAR & SHAFT
9	2	50-23	KEY
10	4	110-2014	SHCS (1/4-20 X 7/8)
11*	1	APS-39LRC-01	GUIDE HANDLE ASM (LRC)
12	2	110-1628	SHCS (10-24 X 1-3/4)
13	1	50-01	GREASE FITTING
14	1	APS-02	LOWER HOUSING
15	2	230-210	O-RING
16	1	APS-62LRC	AIR TUBE
17	1	130-2208	SHSS (5/16-18 X 1/2)
18*	1	APS-32	THROTTLE HANDLE ASM
19	1	APS-34	THROTTLE ADAPTER
20	2	110-2224	SHCS (5/16-18 X 1-1/2)

PART #: APS-201-03

DESCRIPTION: GEAR HEAD ASM, APS-438LRC

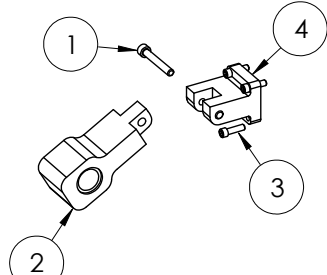
* **PART #: APS-10-01**
DESCRIPTION: FRONT HOUSING ASM

ITEM #	QTY	PART #	DESCRIPTION
1	1	APS-10	FRONT HOUSING
2	2	133-4812	DP (1/4 X 3/4)



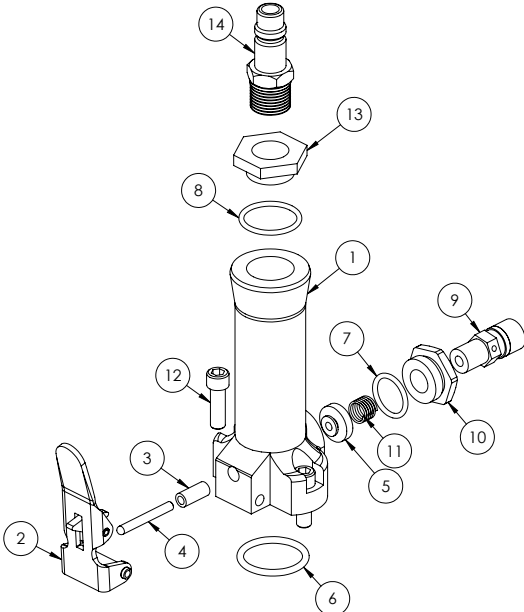
* **PART #: APS-39LRC-01**
DESCRIPTION: GUIDE HANDLE ASM (LRC)

ITEM #	QTY	PART #	DESCRIPTION
1	1	110-2428	SHCS (3/8-16 X 1-3/4)
2	1	APS-39LRC	GUIDE HANDLE, LRC
3	4	110-2014	SHCS (1/4-20 X 7/8)
4	1	APS-78	HANDLE PIVOT



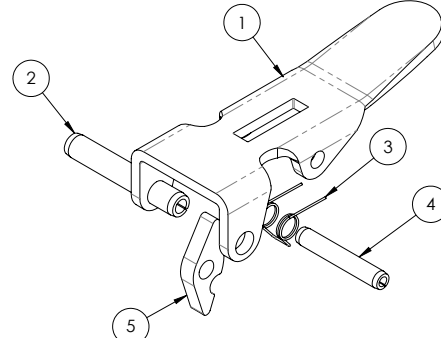
* **PART #: APS-32**
DESCRIPTION: THROTTLE HANDLE ASM

ITEM #	QTY	PART #	DESCRIPTION
1	1	APS-32_PART	THROTTLE HANDLE
2*	1	APS-21	THROTTLE LEVER ASM
3	1	APS-31A	BUSHING
4	1	APS-31	VALVE STEM
5	1	APS-30	VALVE
6	1	230-218	O-RING
7	1	230-117	O-RING
8	1	230-122	O-RING
9	1	APS-26	RELIEF VALVE
10	1	APS-27	VALVE CAP
11	1	APS-29	SPRING
12	2	110-2216	SHCS (5/16-18 X 1)
13	1	APS-25	INLET ADAPTER
14	1	355-5252	NIPPLE (1/2 X 1/2 NPT)



* **PART #: APS-21**
DESCRIPTION: THROTTLE LEVER ASM

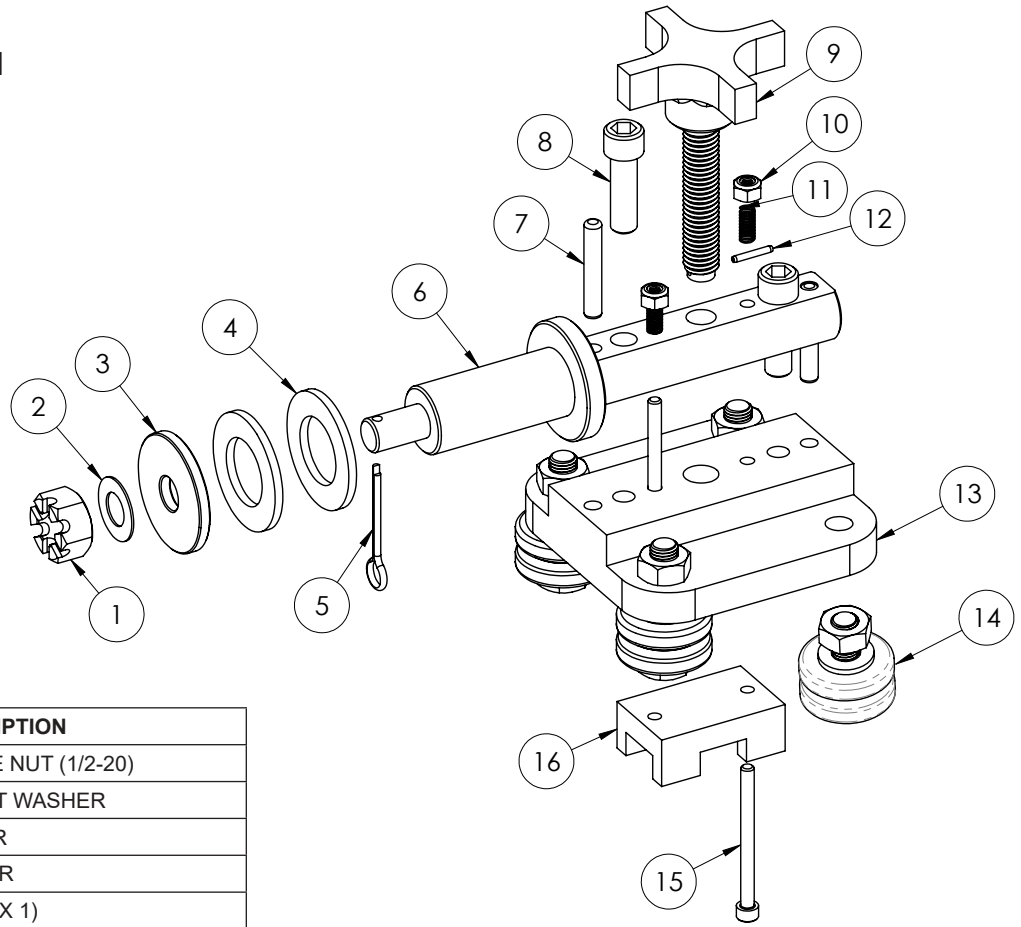
ITEM #	QTY	PART #	DESCRIPTION
1	1	APS-21A	THROTTLE LEVER
2	1	134-4824	SSP (1/4 X 1-1/2)
3	1	APS-21C	SPRING
4	1	134-4618	SSP (3/16 X 1-1/8)
5	1	APS-21D	SAFETY PAWL



PART #: SPA-00-01

DESCRIPTION: TRACK POST ASM

APPLICABLE SAW MODELS: APS-438 & APS-438LP



ITEM #	QTY	PART #	DESCRIPTION
1	1	177-029	CASTLE NUT (1/2-20)
2	1	318-002A	THRUST WASHER
3	1	APS-54	SPACER
4	2	APS-55	WASHER
5	1	137-4316	CP (1/8 X 1)
6	1	APS-57	POST
7	2	133-4824	DP (1/4 X 1-1/2)
8	2	110-2420	SHCS (3/8-16 X 1-1/4)
9	1	APS-43	BRAKE HANDLE
10	2	176-016	LOCK NUT (10-24)
11	2	APS-45	SPRING
12	1	134-4210	SSP (3/32 X 5/8)
13	1	APS-48	BASE PLATE
14*	4	1050-78	WHEEL ASM
15	2	110-1636	SHCS (10-24 X 2-1/4)
16	1	APS-47	BRAKE PAD

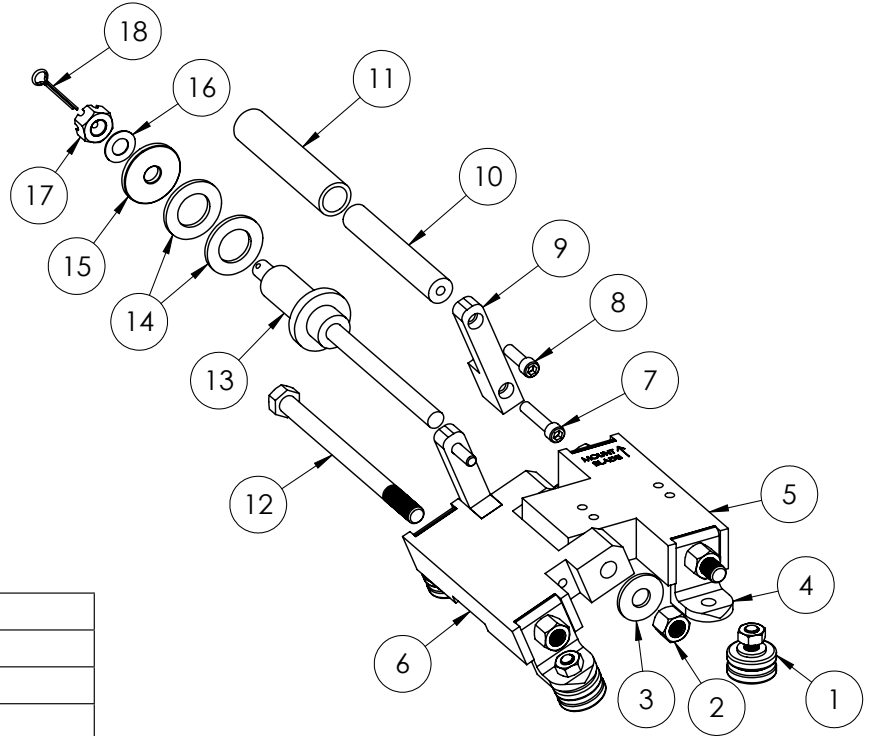
* **PART #:** 1050-78
DESCRIPTION: WHEEL ASM

ITEM #	QTY	PART #	DESCRIPTION
1	1	124-6645	BOLT (M10-1.25 X 45)
2	2	1050-78A	WHEEL HALF
3	1	1050-77	WASHER
4	1	175-066	NUT (M10-1.25)

PART #: TR-205-02

DESCRIPTION: TROLLEY ASM (LRC)

APPLICABLE SAW MODELS: APS-438LRC

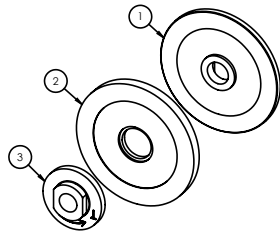


ITEM #	QTY	PART #	DESCRIPTION
1*	4	1050-78-01	WHEEL ASM
2	3	176-028	LOCK NUT (1/2-13)
3	1	160-035	WASHER
4	4	APS-74	WHEEL HOLDER
5	1	APS-71	MALE TROLLEY
6	1	APS-72	FEMALE TROLLEY
7	2	110-2224	SHCS (5/16-18 X 1-1/2)
8	2	110-2216	SHCS (5/16-18 X 1)
9	2	APS-90	HANDLE BRACKET
10	1	APS-91	HANDLE
11	1	APS-92	HANDLE GRIP
12	2	APS-70	BOLT (1/2-13 X 7)
13	1	APS-57A	POST (LRC)
14	2	APS-55	WASHER
15	1	APS-54	SPACER
16	1	318-002A	THRUST WASHER
17	1	177-029	CASTLE NUT (1/2-20)
18	1	137-4316	CP (1/8 X 1)

* **PART #:** 1050-78-01
DESCRIPTION: WHEEL ASM

ITEM #	QTY	PART #	DESCRIPTION
1	1	1050-78C	BOLT (M10-1.25 X 35)
2	2	1050-78A	WHEEL HALF
3	1	160-009	WASHER
4	1	175-066	NUT (M10-1.25)

ARBOR WHEEL SETS



PART #: APS-12-01

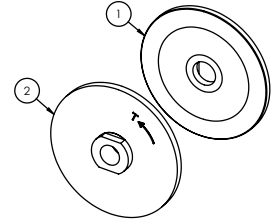
DESCRIPTION: ARBOR SET, STND

ITEM #	QTY	PART #	DESCRIPTION
1	1	APS-11	REAR FLANGE
2	1	APS-12	FRONT FLANGE
3	1	APS-13	FLANGE NUT

PART #: APS-12A-01

DESCRIPTION: ARBOR SET, CARB

ITEM #	QTY	PART #	DESCRIPTION
1	1	APS-11A	REAR FLANGE
2	1	APS-12	FRONT FLANGE
3	1	APS-13	FLANGE NUT



PART #: APS-219-01

DESCRIPTION: ARBOR SET, MEM

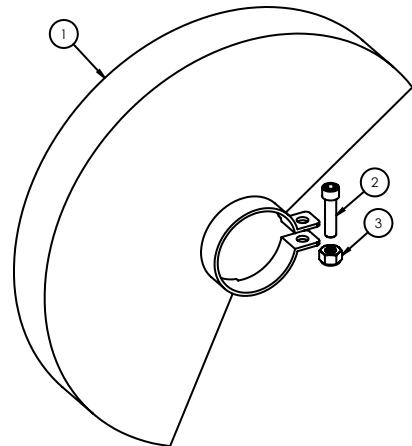
ITEM #	QTY	PART #	DESCRIPTION
1	1	APS-11	REAR FLANGE
2	1	APS-219	FRONT FLANGE (MEM)

GUARD ASSEMBLIES

PART #: APS-14-08

DESCRIPTION: GUARD ASM, 8

ITEM #	QTY	PART #	DESCRIPTION
1	1	APS-14A	GUARD, 8
2	1	110-2220	SHCS (5/16-18 X 1-1/4)
3	1	175-022	NUT (5/16-18)



PART #: APS-14-08A

DESCRIPTION: GUARD ASM, 8-1/4

ITEM #	QTY	PART #	DESCRIPTION
1	1	APS-14A-1	GUARD, 8-1/4
2	1	110-2220	SHCS (5/16-18 X 1-1/4)
3	1	175-022	NUT (5/16-18)

PART #: APS-14-12

DESCRIPTION: GUARD ASM, 12

ITEM #	QTY	PART #	DESCRIPTION
1	1	APS-14C	GUARD, 12
2	1	110-2220	SHCS (5/16-18 X 1-1/4)
3	1	175-022	NUT (5/16-18)

PART #: APS-14-10

DESCRIPTION: GUARD ASM, 10

ITEM #	QTY	PART #	DESCRIPTION
1	1	APS-14B	GUARD, 10
2	1	110-2220	SHCS (5/16-18 X 1-1/4)
3	1	175-022	NUT (5/16-18)

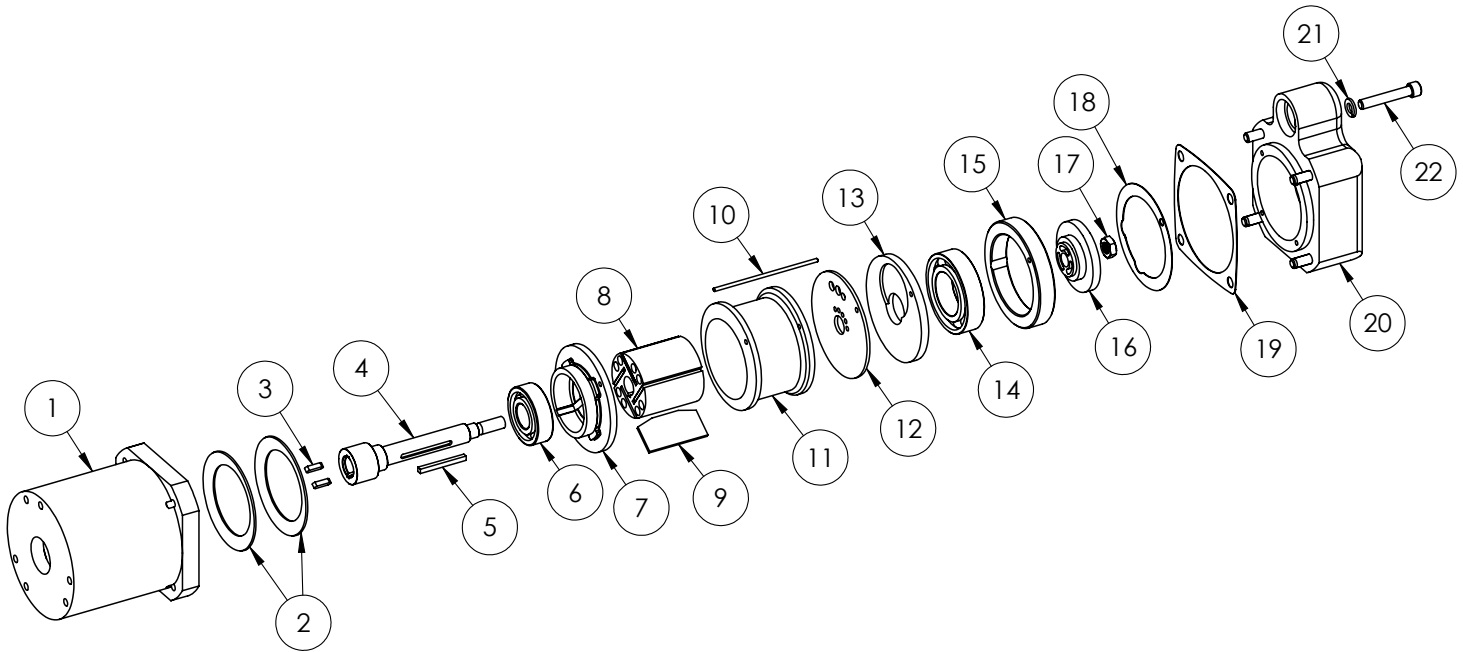
PART #: APS-14-14

DESCRIPTION: GUARD ASM, 14

ITEM #	QTY	PART #	DESCRIPTION
1	1	APS-14D	GUARD, 14
2	1	110-2220	SHCS (5/16-18 X 1-1/4)
3	1	175-022	NUT (5/16-18)

PART #: 10-67-01

DESCRIPTION: PN MOTOR ASM (APS)



ITEM #	QTY	PART #	DESCRIPTION
1	1	10-31	HOUSING
2	2	10-32	SPRING WASHER
3	2	50-23	KEY
4	1	APS-63	ROTOR SHAFT
5	1	10-34	KEY
6	1	311-018	BALL BEARING
7	1	10-37	FRONT END PLATE
8	1	10-46	ROTOR
9	1	10-47	ROTOR BLADES (SET OF 4)
10	1	10-43	ALIGNMENT PIN
11	1	10-45	CYLINDER
12	1	10-44	REAR END PLATE
13	1	10-42	BACKING PLATE
14	1	311-039	BALL BEARING
15	1	10-40	SLEEVE
16	1	10-39	FLOW CONTROL
17	1	10-38	REVERSE THREAD NUT
18	1	10-48	GASKET
19	1	10-49	GASKET
20	1	APS-59	MOTOR CAP
21	4	166-031	LOCK WASHER
22	4	110-2024	SHCS (1/4-20 X 1-1/2)

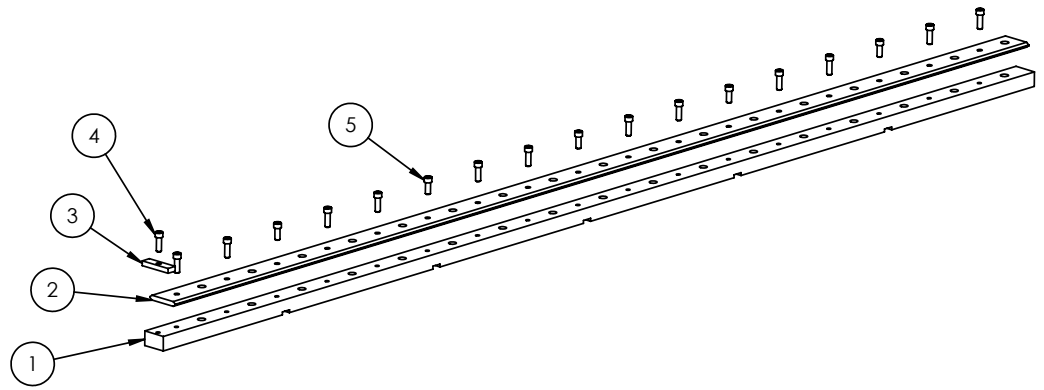
PART #: TR-05

DESCRIPTION: TRACK ASM, 5

APPLICABLE SAW MODELS: *APS-438 & APS-438LP*

TRACK IS STOCKED IN 5 FOOT SECTIONS BUT CAN ALSO BE CUSTOM MADE FOR APPLICATIONS REQUIRING LONGER TRACK SECTIONS.

REQUIRES WELD TABS OR QUICK CLAMP FOR MOUNTING.



ITEM #	QTY	PART #	DESCRIPTION
1	1	TR-01	BASE RAIL, 5
2	1	TR-02	TOP RAIL, 5
3	1	TR-04	TRACK STOP
4	13	110-2012	SHCS (1/4-20 X 3/4)
5	5	110-2010	SHCS (1/4-20 X 5/8)

CUSTOM LENGTH TRACKS

PART #: TR-CL
DESCRIPTION: TRACK ASM, CUST

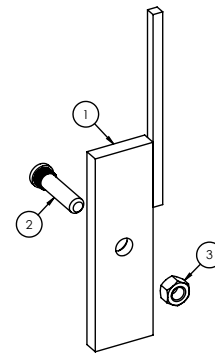
CUSTOM LENGTH TRACKS ARE PRICED PER FOOT AND MAY REQUIRE LEAD TIME FOR BUILDING.

PART #: TR-WT

DESCRIPTION: WELD TAB ASM

NOTE: SUGGESTED WELD TAB RATIO IS (1) WELD TAB EVERY 2-3 FEET

ITEM #	QTY	PART #	DESCRIPTION
1	1	TR-WT_PART	WELD TAB (PART ONLY)
2	1	TR-WTA	PRESS IN STUD
3	1	175-024	NUT (3/8-16)



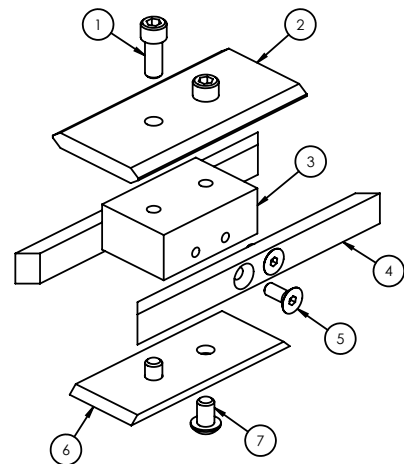
PART #: TR-TC

DESCRIPTION: TRACK CONNECTOR ASM

USED FOR CONNECTING STRAIGHT TRACK SECTIONS.

NOTE: TR-04, TRACK STOP MUST BE REMOVED FROM ONE OF THE TRACK SECTIONS TO ALLOW TRACK CONNECTOR TO BE INSTALLED.

ITEM #	QTY	PART #	DESCRIPTION
1	2	110-2010	SHCS (1/4-20 X 5/8)
2	1	TR-TC-01	TRACK TOP PLATE
3	1	TR-TC-02	TRACK BACKING
4	2	TR-TC-03	GUIDE
5	4	112-1608	FHCS (10-24 X 1/2)
6	1	TR-TC-04	BACKING GUIDE
7	2	111-2006	BHCS (1/4-20 X 3/8)

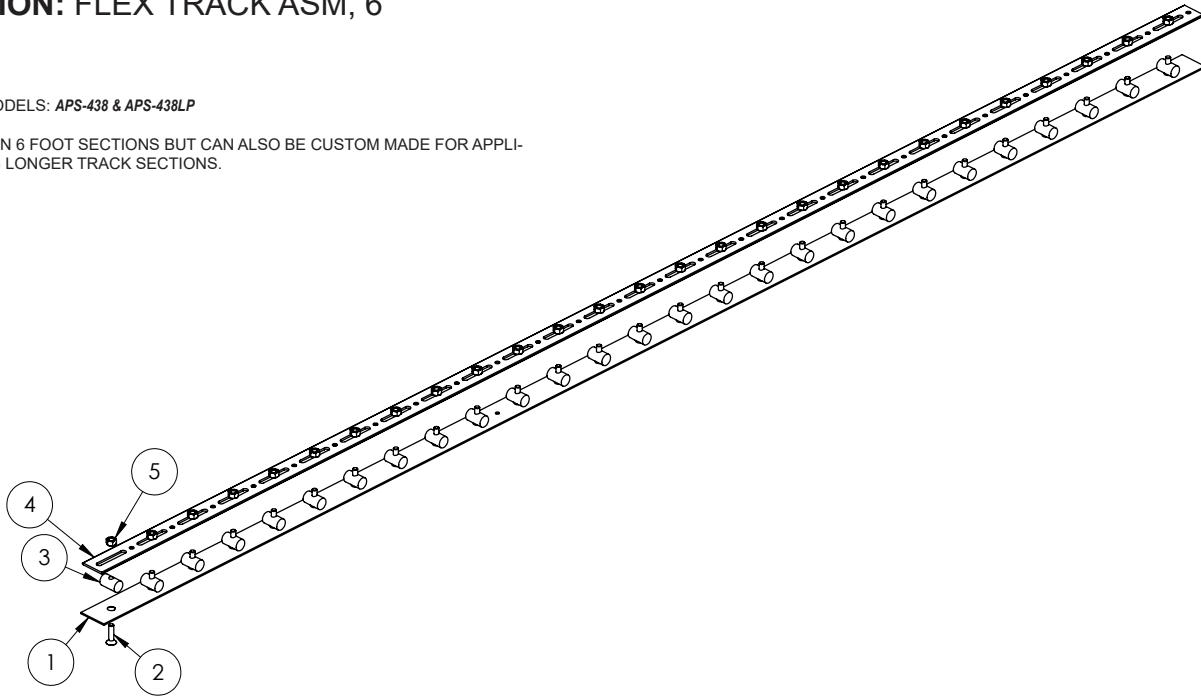


PART #: TR-FL-06

DESCRIPTION: FLEX TRACK ASM, 6

APPLICABLE SAW MODELS: *APS-438 & APS-438LP*

TRACK IS STOCKED IN 6 FOOT SECTIONS BUT CAN ALSO BE CUSTOM MADE FOR APPLICATIONS REQUIRING LONGER TRACK SECTIONS.



ITEM #	QTY	PART #	DESCRIPTION
1	1	TR-FL-01	FLEX TRACK, BASE
2	27	112-2220	FHCS (5/16-18 X 1-1/4)
3	27	TR-FL-02	FLEX TRACK, DOWEL
4	1	TR-FL-03	FLEX TRACK, TOP PLATE
5	27	175-024	NUT (3/8-16)

CUSTOM LENGTH FLEX TRACKS

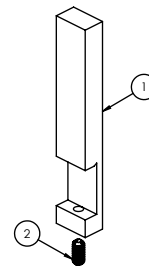
PART #: TR-FL
DESCRIPTION: FLEX TRACK ASM, CUST

CUSTOM LENGTH TRACKS ARE PRICED PER FOOT AND MAY REQUIRE LEAD TIME FOR BUILDING.

PART #: APS-221FL
DESCRIPTION: INDICATOR ASM (FL)

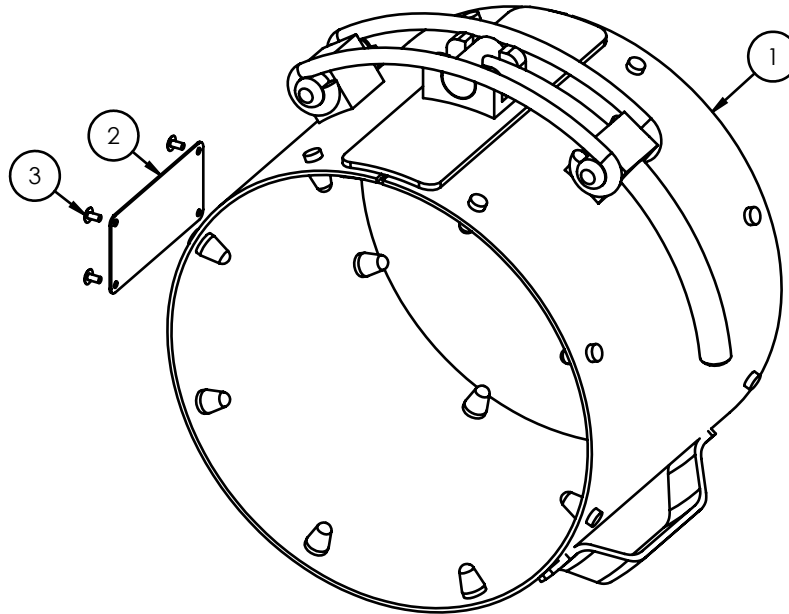
APPLICABLE SAW MODELS: *APS-438 & APS-438LP*

ITEM #	QTY	PART #	DESCRIPTION
1	1	APS-221FL-01	CUT-LINE INDICATOR
2	2	131-2414BN	SHSS-BN (3/8-16 X 7/8)



ESCOWRAP ASSEMBLIES

APPLICABLE SAW MODELS: APS-438LRC
 APS-438 & APS-438LP (WITH TR-205-01 TROLLEY ASM)

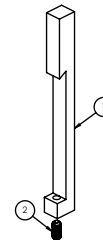


ITEM #	QTY	PART #	DESCRIPTION
1	1	206C-6	BEVELING BAND, 6
2	1	NP-100	NAME PLATE (ESCO)
3	4	138-0403	UDS (4 X 3/16)

PART #: APS-221
DESCRIPTION: INDICATOR ASM (WRAP)

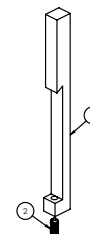
APPLICABLE SAW MODELS: APS-438 & APS-438LP

ITEM #	QTY	PART #	DESCRIPTION
1	1	APS-221-01	CUT-LINE INDICATOR
2	2	131-2414BN	SHSS-BN (5/16-18 X 7/8)



PART #: APS-221A
DESCRIPTION: INDICATOR ASM (LRC)

ITEM #	QTY	PART #	DESCRIPTION
1	1	APS-221A-01	CUT-LINE INDICATOR
2	2	131-2414BN	SHSS-BN (5/16-18 X 7/8)



ESCOWRAP ASSEMBLIES

NOTE: ESCOWRAP ASSEMBLIES DO NOT COME WITH CUT-LINE INDICATORS. PLEASE VERIFY YOUR SAW MODEL TO DETERMINE THE CORRECT CUT-LINE INDICATORS.

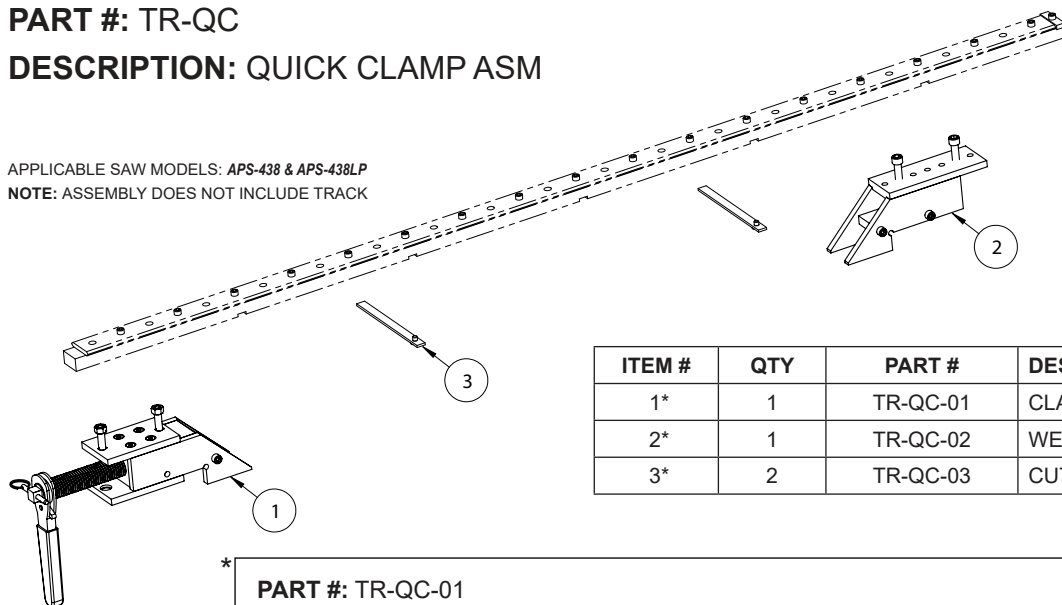
WRAP ASSEMBLIES			BEVELING BAND	INDICATOR
SIZE	PART #	DESCRIPTION	PART #	REC QTY
6"	EW-06	ESCOWRAP, 6	206C-6	2
8"	EW-08	ESCOWRAP, 8	206C-8	2
10"	EW-10	ESCOWRAP, 10	206C-10	2
12"	EW-12	ESCOWRAP, 12	206D-12	2
14"	EW-14	ESCOWRAP, 14	206D-14	2
16"	EW-16	ESCOWRAP, 16	206D-16	2
18"	EW-18	ESCOWRAP, 18	206D-18	2
20"	EW-20	ESCOWRAP, 20	206D-20	2
22"	EW-22	ESCOWRAP, 22	206D-22	2
24"	EW-24	ESCOWRAP, 24	206D-24	3
26"	EW-26	ESCOWRAP, 26	206D-26	3
28"	EW-28	ESCOWRAP, 28	206D-28	3
30"	EW-30	ESCOWRAP, 30	206D-30	3
32"	EW-32	ESCOWRAP, 32	206D-32	3
34"	EW-34	ESCOWRAP, 34	206D-34	3
36"	EW-36	ESCOWRAP, 36	206D-36	3
38"	EW-38	ESCOWRAP, 38	206D-38	3
40"	EW-40	ESCOWRAP, 40	206D-40	4
42"	EW-42	ESCOWRAP, 42	206D-42	4
44"	EW-44	ESCOWRAP, 44	206D-44	4
46"	EW-46	ESCOWRAP, 46	206D-46	4
48"	EW-48	ESCOWRAP, 48	206D-48	4
50"	EW-50	ESCOWRAP, 50	206D-50	5
52"	EW-52	ESCOWRAP, 52	206D-52	5
54"	EW-54	ESCOWRAP, 54	206D-54	5
56"	EW-56	ESCOWRAP, 56	206D-56	5
58"	EW-58	ESCOWRAP, 58	206D-58	5
60"	EW-60	ESCOWRAP, 60	206D-60	5

PART #: TR-QC

DESCRIPTION: QUICK CLAMP ASM

APPLICABLE SAW MODELS: APS-438 & APS-438LP

NOTE: ASSEMBLY DOES NOT INCLUDE TRACK



ITEM #	QTY	PART #	DESCRIPTION
1*	1	TR-QC-01	CLAMP WEDGE ASM
2*	1	TR-QC-02	WEDGE ASM
3*	2	TR-QC-03	CUT-LINE INDICATOR

* **PART #: TR-QC-01**
DESCRIPTION: CLAMP WEDGE ASM

ITEM #	QTY	PART #	DESCRIPTION
1	1	QC-02A	PIN
2	1	QC-03	ACME SCREW
3	1	QC-12	CLAMP SUPPORT
4	2	QC-10	WEDGE SUPPORT
5	6	110-2214	SHCS (5/16-18 X 7/8)
6	2	134-4832	SSP (1/4 X 2)
7	1	QC-07	ACME FEED NUT
8	1	QC-08	WEDGE
9	1	QC-06	MOUNTING PLATE
10	8	113-2408	LHCS (3/8-16 X 1/2)
11	2	175-024	NUT (3/8-16)
12	1	QC-01	WRENCH ASM

* **PART #: TR-QC-02**
DESCRIPTION: WEDGE ASM

ITEM #	QTY	PART #	DESCRIPTION
1	1	QC-16	CLAMP SUPPORT
2	2	110-2214	SHCS (5/16-18 X 7/8)
3	1	QC-14	CLAMP STOP
4	2	110-2424	SHCS (3/8-16 X 1-1/2)

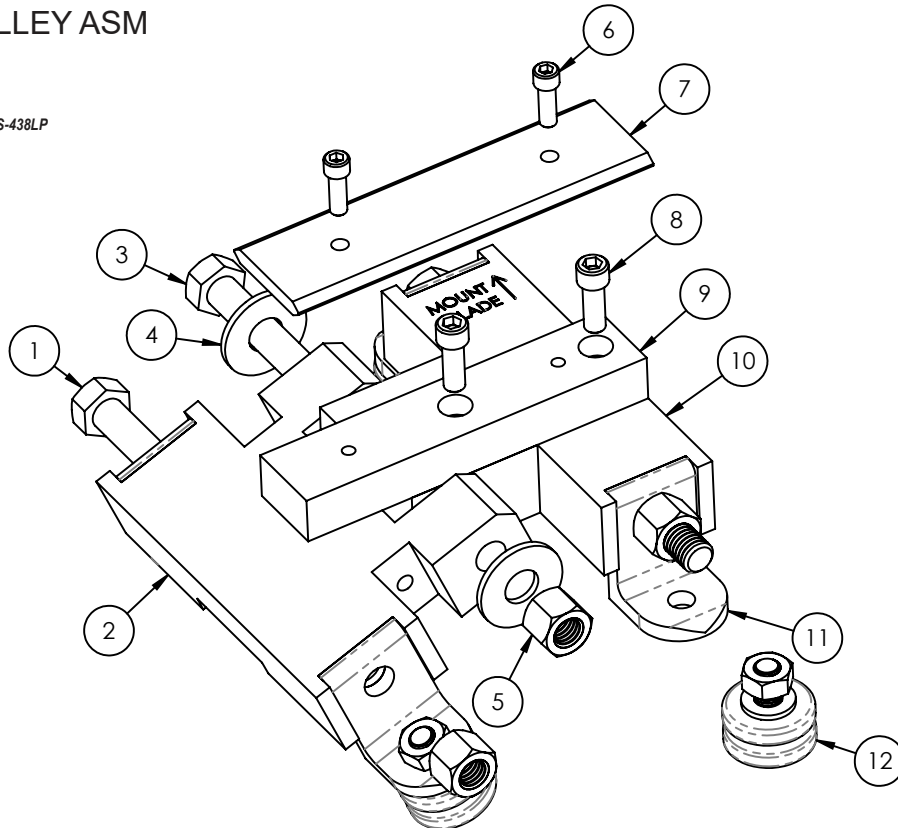
* **PART #: TR-QC-03**
DESCRIPTION: CUT-LINE INDICATOR (QC)

ITEM #	QTY	PART #	DESCRIPTION
1	1	112-2006	FHCS (1/4-20 X 3/8)
2	1	QC-20	INDICATOR

PART #: TR-205-01

DESCRIPTION: TROLLEY ASM

APPLICABLE SAW MODELS: APS-438 & APS-438LP



ITEM #	QTY	PART #	DESCRIPTION
1	2	APS-70	BOLT (1/2-13 X 7)
2	1	APS-72	FEMALE TROLLEY
3	1	APS-80	BOLT (1/2-13 X 6)
4	2	160-035	WASHER
5	3	176-028	LOCK NUT (1/2-13)
6	2	110-2012	SHCS (1/4-20 X 3/4)
7	1	APS-83	TOP RAIL
8	2	110-2214	SHCS (5/16-18 X 7/8)
9	1	APS-84	BASE RAIL
10	1	APS-71	MALE TROLLEY
11	4	APS-74	WHEEL HOLDER
12*	4	1050-78-01	WHEEL ASM

* **PART #:** 1050-78-01
DESCRIPTION: WHEEL ASM

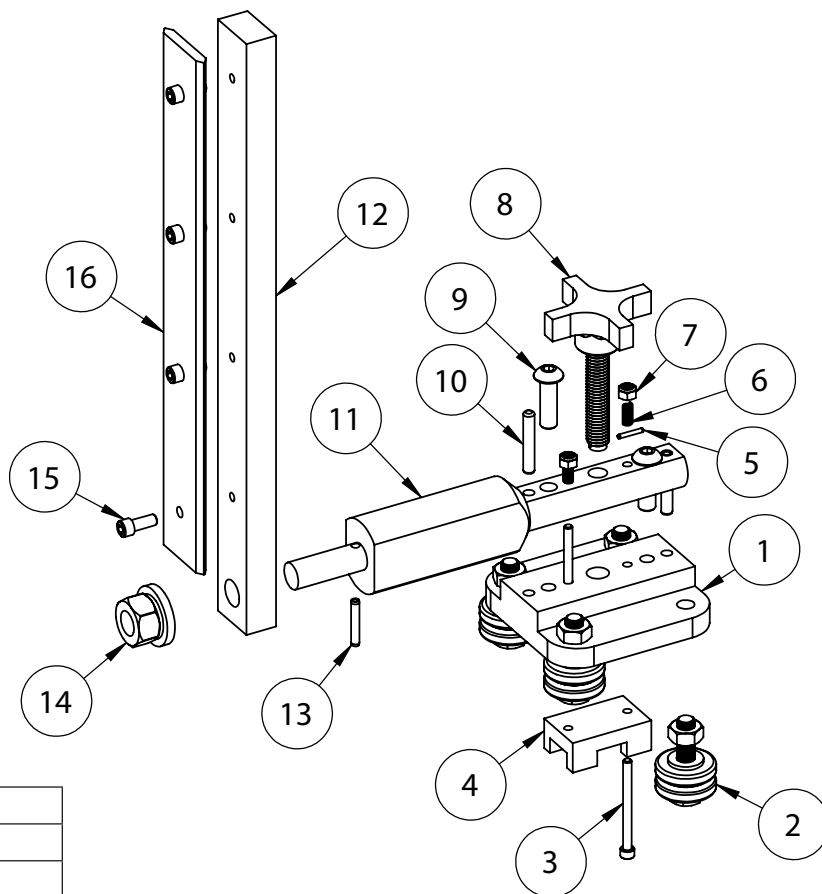
ITEM #	QTY	PART #	DESCRIPTION
1	1	1050-78C	BOLT (M10-1.25 X 35)
2	2	1050-78A	WHEEL HALF
3	1	160-009	WASHER
4	1	175-066	NUT (M10-1.25)

PART #: APS-218

DESCRIPTION: MEMBRANE BRACKET ASM

APPLICABLE SAW MODELS: APS-438 & APS-438LP

NOTE: APS-219-01 ARBOR WHEEL SET IS REQUIRED FOR INSTALLING MEMBRANE CUT-OFF WHEELS ON APS-438 & APS-438LP. THIS ASSEMBLY DOES NOT COME WITH APS-219-01.



ITEM #	QTY	PART #	DESCRIPTION
1	1	APS-48	BASE PLATE
2*	4	1050-78	WHEEL ASM
3	2	110-1636	SHCS (10-24 X 2-1/4)
4	1	APS-47	BRAKE PAD
5	1	134-4210	SSP (3/32 X 5/8)
6	2	APS-45	SPRING
7	2	176-016	LOCK NUT (10-24)
8	1	APS-43	BRAKE HANDLE
9	2	110-2420	SHCS (3/8-16 X 1-1/4)
10	2	133-4824	DP (1/4 X 1-1/2)
11	1	APS-69	MEMBRANE POST
12	1	134-4620	SSP (3/16 X 1-1/4)
13	1	APS-64	BASE RAIL (MEM)
14	1	APS-67	FLANGE NUT (5/8-18)
15	4	110-2010	SHCS (1/4-20 X 5/8)
16	1	APS-66	TOP RAIL (MEM)

* **PART #: 1050-78**
DESCRIPTION: WHEEL ASM

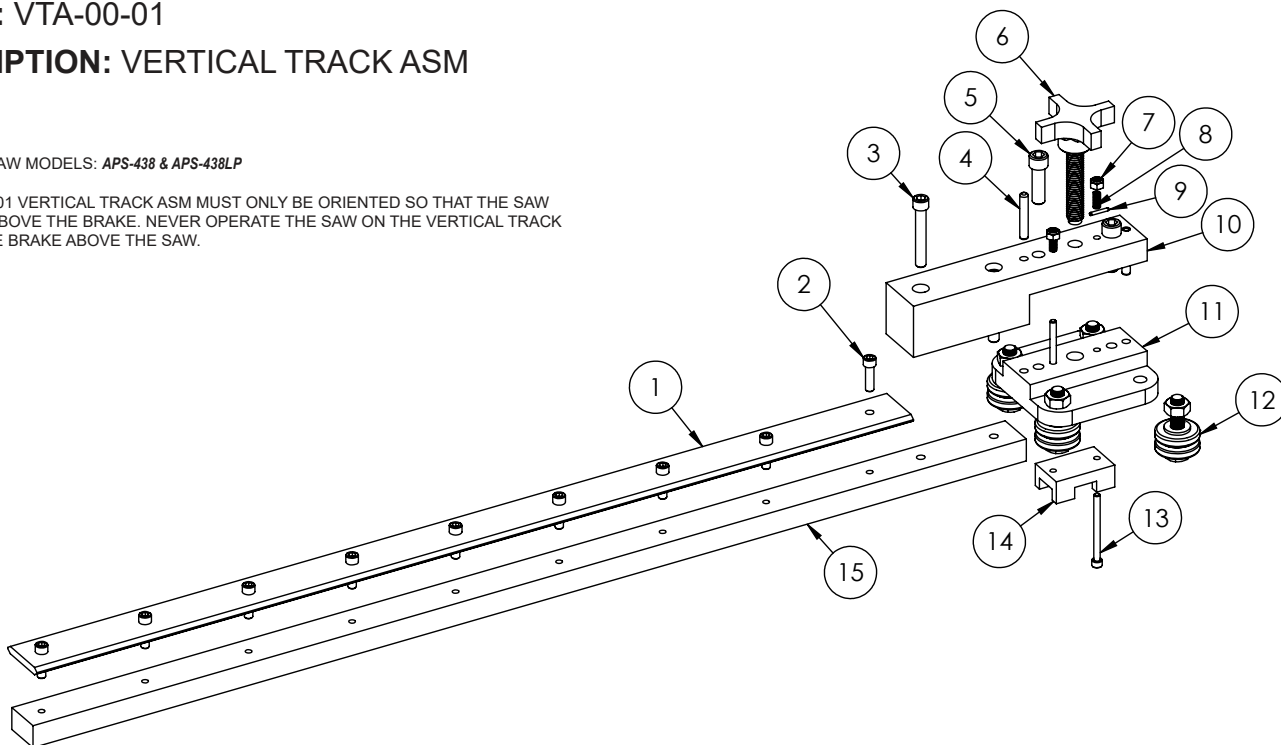
ITEM #	QTY	PART #	DESCRIPTION
1	1	124-6645	BOLT (M10-1.25 X 45)
2	2	1050-78A	WHEEL HALF
3	1	1050-77	WASHER
4	1	175-066	NUT (M10-1.25)

PART #: VTA-00-01

DESCRIPTION: VERTICAL TRACK ASM

APPLICABLE SAW MODELS: APS-438 & APS-438LP

NOTE: VTA-00-01 VERTICAL TRACK ASM MUST ONLY BE ORIENTED SO THAT THE SAW IS MOUNTED ABOVE THE BRAKE. NEVER OPERATE THE SAW ON THE VERTICAL TRACK ASM, WITH THE BRAKE ABOVE THE SAW.



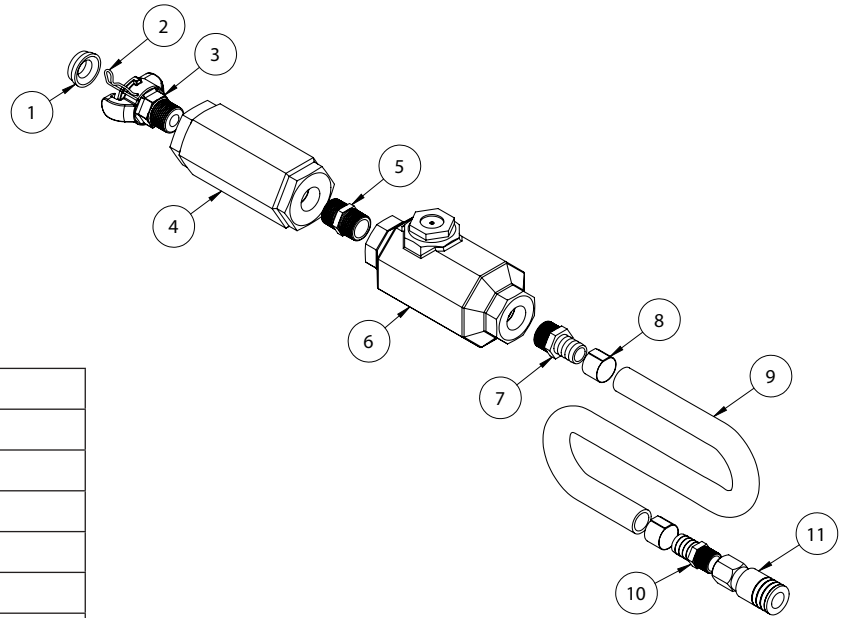
ITEM #	QTY	PART #	DESCRIPTION
1	1	VTA-02-01	TOP RAIL (VTA)
2	9	110-2014	SHCS (1/4-20 X 7/8)
3	2	110-2232	SHCS (5/16-18 X 2)
4	2	133-4824	DP (1/4 X 1-1/2)
5	2	110-2420	SHCS (3/8-16 X 1-1/4)
6	1	APS-43	BRAKE HANDLE
7	2	176-016	LOCK NUT (10-24)
8	2	APS-45	SPRING
9	1	134-4210	SSP (3/32 X 5/8)
10	1	VTA-01-01	VERTICAL TRACK BRACKET
11	1	APS-48	BASE PLATE
12*	4	1050-78	WHEEL ASM
13	2	110-1636	SHCS (10-24 X 2-1/4)
14	1	APS-47	BRAKE PAD
15	1	VTA-03-01	BASE RAIL (VTA)

* **PART #: 1050-78**
DESCRIPTION: WHEEL ASM

ITEM #	QTY	PART #	DESCRIPTION
1	1	124-6645	BOLT (M10-1.25 X 45)
2	2	1050-78A	WHEEL HALF
3	1	1050-77	WASHER
4	1	175-066	NUT (M10-1.25)

PART #: AH-204

DESCRIPTION: HOSE ASM, 3/4 (1/2 CPL)



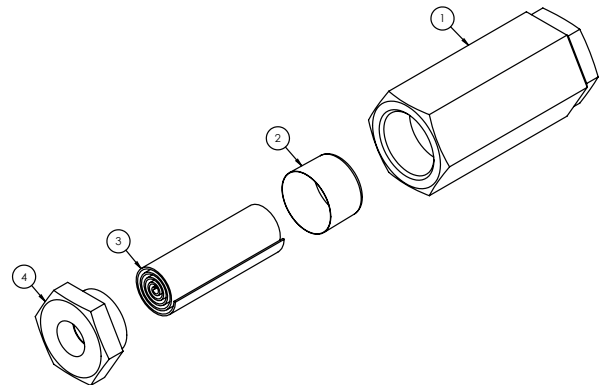
ITEM #	QTY	PART #	DESCRIPTION
1	1	AHW-304	SEAL
2	1	AHW-306	SAFETY PIN
3	1	AHB-305	CHICAGO FITTING, 3/4
4*	1	AHB-307	FILTER ASM
5	1	353-5454	TH'D COUPLER (3/4 X 3/4)
6*	1	AHB-311	OILER ASM
7	1	350-5454	HOSE BARB (3/4 X 3/4 NPT)
8	2	AHW-313	HOSE CLAMP (1-1/4 ID)
9	6	340-075	HOSE (3/4 X 12)
10	1	350-5452	HOSE BARB (3/4 X 1/2 NPT)
11	1	352-5252	Q-C COUPLER (1/2 X 1/2)

*AHB-311 EXPLODED VIEW DRAWING SHOWN ON NEXT PAGE

PART #: AHB-307

DESCRIPTION: FILTER ASM

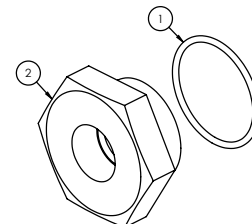
ITEM #	QTY	PART #	DESCRIPTION
1	1	AHB-307A	HOUSING
2	1	AHB-309	SCREEN
3	1	AHB-308	FILTER
4*	1	AHB-307B	CAP ASM



*

PART #: AHB-307B
DESCRIPTION: CAP ASM

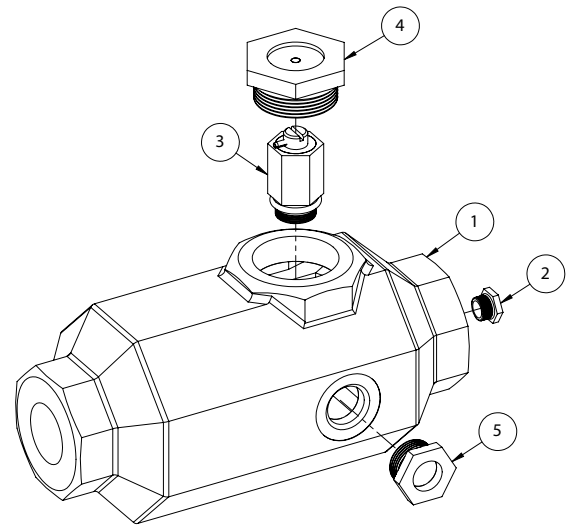
ITEM #	QTY	PART #	DESCRIPTION
1	1	230-132	O-RING
2	1	AHB-00-307B	CAP



PART #: AHB-311

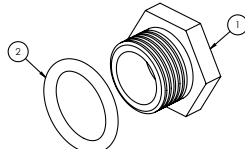
DESCRIPTION: OILER ASM

ITEM #	QTY	PART #	DESCRIPTION
1	1	AHB-311A	OILER HOUSING
2*	1	AHB-315A	CHECK VALVE ASM
3*	1	AHB-314	FEEDER ASM
4*	1	AHB-313A	FILLER CAP ASM
5*	1	AHB-318A	SIGHT WINDOW ASM



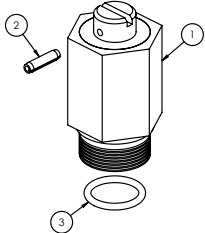
* **PART #: AHB-315A**
DESCRIPTION: CHECK VALVE ASM

ITEM #	QTY	PART #	DESCRIPTION
1	1	AHB-00-315A	CHECK VALVE
2	1	230-012	O-RING



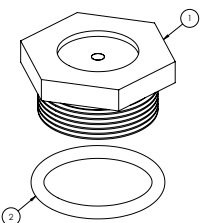
* **PART #: AHB-314**
DESCRIPTION: FEEDER ASM

ITEM #	QTY	PART #	DESCRIPTION
1	1	AHB-00-314	FEEDER
2	1	134-4206	SSP (3/32 X 3/8)
3	1	230-013	O-RING



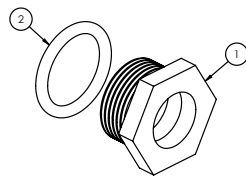
* **PART #: AHB-313A**
DESCRIPTION: FILLER CAP ASM

ITEM #	QTY	PART #	DESCRIPTION
1	1	AHB-00-313A	FILLER CAP
2	1	230-118	O-RING



* **PART #: AHB-318A**
DESCRIPTION: SIGHT WINDOW ASM

ITEM #	QTY	PART #	DESCRIPTION
1	1	AHB-00-318A	SIGHT WINDOW
2	1	230-115	O-RING












SAW BLADES

APPLICABLE MODELS:

- APS-438**
- APS-438LP**
- APS-438LRC**

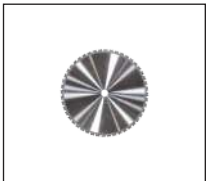
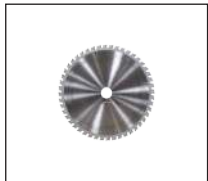
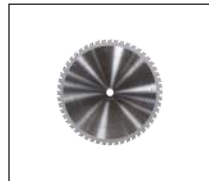
ABRASIVE CUT-OFF BLADES

 <p>APS-211 8" / 203.2MM CUT-OFF BLADE 1/16" / 1.6MM WIDE</p>	 <p>APS-212 10" / 254MM CUT-OFF BLADE 1/16" / 1.6MM WIDE</p>	 <p>APS-213A 12" / 304.8MM CUT-OFF BLADE 3/32" / 2.4MM WIDE STEEL CUTTING</p>	 <p>APS-213D 12" / 304.8MM CUT-OFF BLADE 3/32" / 2.4MM WIDE STAINLESS STEEL CUTTING</p>	 <p>APS-213E 12" / 304.8MM CUT-OFF BLADE 3/32" / 2.4MM WIDE MASONRY CUTTING</p>	 <p>APS-213F 12" / 304.8MM CUT-OFF BLADE 1/8" / 3.2MM WIDE STEEL CUTTING</p>
 <p>APS-214 14" / 355.6MM CUT-OFF BLADE 1/8" / 3.2MM WIDE STEEL CUTTING</p>	 <p>APS-214A 14" / 355.6MM CUT-OFF BLADE 1/8" / 3.2MM WIDE MASONRY CUTTING</p>	 <p>APS-214B 14" / 355.6MM CUT-OFF BLADE 1/8" / 3.2MM WIDE STAINLESS STEEL CUTTING</p>			

ABRASIVE MEMBRANE REMOVAL BLADES

 <p>APS-215 10" / 254MM MEMBRANE REMOVAL BLADE 3/8" / 9.5MM WIDE</p>	 <p>APS-215A 10" / 254MM MEMBRANE REMOVAL BLADE 1/4" / 6.4MM WIDE</p>
---	---

CARBIDE BLADES

 <p>APS-210A 8" / 203.2MM CUT-OFF BLADE 1/16" / 1.6MM WIDE</p>	 <p>APS-210B 10" / 254MM CUT-OFF BLADE 1/16" / 1.6MM WIDE</p>	 <p>APS-210C 12" / 304.8MM CUT-OFF BLADE 3/32" / 2.4MM WIDE STEEL CUTTING</p>
---	---	---

This page has been intentionally left blank

et esco tool®



esco tool

ESCO TOOL

75 October Hill Road • Holliston, MA 01746 USA

1.508.429.4441

email: millhog@escotool.com

Available for Sale or Rent • www.escotool.com