

“Dictator” MILLHOG®

Model D-418
I.D. Clamping End Prep Tool
4.5” I.D. to 18” O.D.
114.3 mm I.D. to 457.2 mm O.D.

Preps heavy wall pipe including Super Duplex and is as easy to use as our smaller models offering an affordable alternative to specialized machine service companies.

Key Features

- One mandrel and 8 sets of clamps needed to cover entire range.
- Three powerful drive choices:
 - 3 hp pneumatic straight drive motor
 - 1800 watt electric motor
 - Hydraulic motor drive with speed control.
- Available off-set gear box reduces the rpm and multiplies the torque.
- Motor drive options are easily changed and are interchangeable with the “Commander”
- Self-centering draw rod actuated clamping system.
- Wide Clamps produce superior clamping force for chatter free end preps
- Uses standard MILLHOG® cutter blades
- All gear drives are interchangeable with the “Commander”
- Fully portable for on-site and shop work
- Available for sale or rent

Applications

- Pipeline construction
- Off-shore super duplex
- Petrochemical
- Power generation
- Systems fabrication

Built for Performance

The ESCO “Dictator” MILLHOG® model D-418 features three drive choices that are capable of performing any degree of end prep on pipe up to 18” schedule 160 without cutting fluids. This portable tool has many advances including a self-centering draw rod actuated clamping system and wide clamps that produce a superior clamping force for chatter free end preps while assuring maximum blade life.

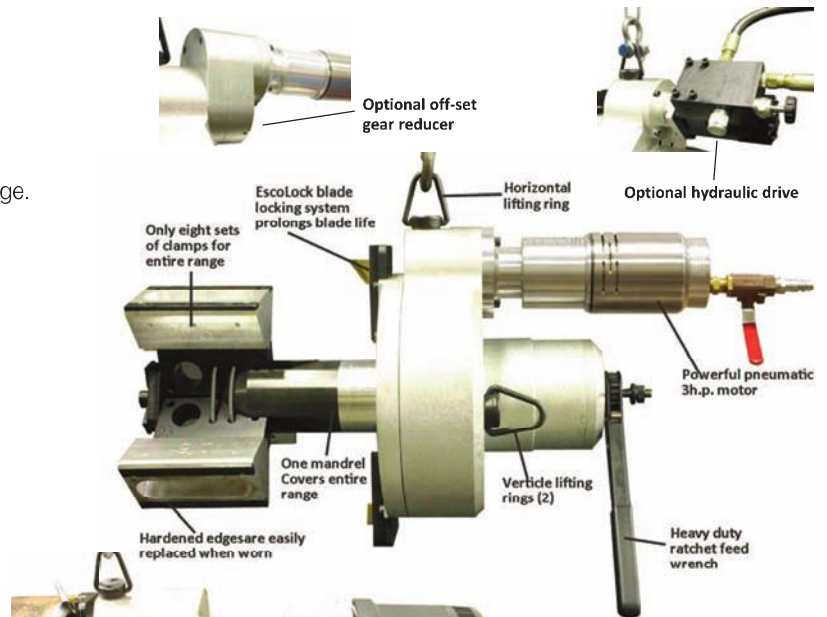
Designed for years of trouble free service the D-418 proprietary gear and bearing system delivers the stability and performance that all MILLHOG® tools have become known for.

Eliminate the need for specialized machine service companies and call today to arrange a no obligation demonstration and see for yourself the difference a MILLHOG® makes.

Dictator Clamp Rib Selector and corresponding spares

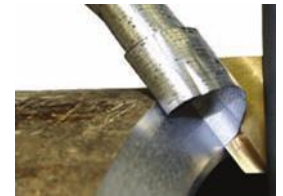
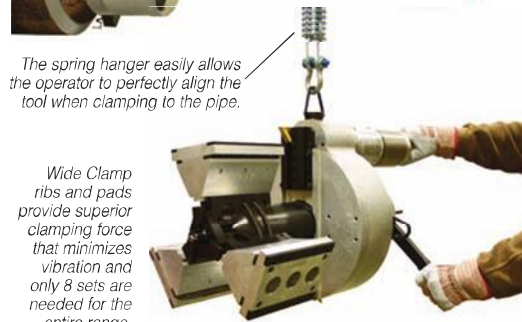
Mandrel, Draw Rod, Actuator, Retention Spring

Clamp Set	I.D. Range				Mandrel		Draw Rod			Actuator		Retention Spring
	in	mm	in	mm	Part #	Size	Part #	Roll Pin	Part #	Roll Pin		
D-01	4.5	5.625	114.3	142.9	D-37	4	D-15	D-12	D-13	D-14		
D-02	5.5	6.625	139.7	168.3	D-37	4	D-15	D-12	D-13	D-14		
D-03	6.5	7.625	165.1	193.7	D-37	4	D-15	D-12	D-13	D-14		
D-02 & D-04	7.5	8.625	190.5	219.1	D-37	4	D-15	D-12	D-13	D-14		
D-03 & D-04	8.5	9.625	215.9	244.5	D-37	4	D-15	D-12	D-13	D-14		
D-02 & D-05	9.5	10.625	241.3	269.9	D-37	4	D-15	D-12	D-13	D-14		
D-03 & D-05	10.5	11.625	266.7	295.3	D-37	4	D-15	D-12	D-13	D-14		
D-02 & D-06	11.5	12.625	292.1	320.7	D-37	4	D-15	D-12	D-13	D-14		
D-03 & D-06	12.5	13.625	317.5	346.1	D-37	4	D-15	D-12	D-13	D-14		
D-02 & D-06 & D-07	13.5	14.625	342.9	371.5	D-37	4	D-15	D-12	D-13	D-14		
D-03 & D-06 & D-07	14.5	15.625	368.3	369.9	D-37	4	D-15	D-12	D-13	D-14		
D-02 & D-08	15.5	16.625	393.7	422.3	D-37	4	D-15	D-12	D-13	D-14		
D-03 & D-08	16.5	17.625	419.1	447.7	D-37	4	D-15	D-12	D-13	D-14		



The hydraulic motor with speed control motor offers consistent power at various RPMs for the most difficult materials and produces 6,000 ft. lbs. at the cutting bit.

The variable speed electric motor combined with the gear box reducer delivers plenty of power for heavy wall pipe.



Dictator Standard Kit Includes:

Gear Head, Feed Mechanism, 3 HP Pneumatic Motor (Electric or Hydraulic Motor may be substituted; consult factory), 2 Blade Blocks, Draw Rod Assembly, Mandrel, Hose with couplings, dirt stopper and oiler, & Carrying Case.

Specifications

“Dictator” MILLHOG® model D-418	
Working Range:	4.5” (114.3 mm) I.D. to 18.00” (457.2 mm) O.D.
Motor, pneumatic	3 h.p. (2.244 kw)
Air Pressure	90 psi. (6.2 bar)
Air Volume	95 cfm (2690 l/min.)
Speed	8 RPM
Motor, electric	110 volt 1800 watt 40/60 hz, 230 volt (consult factory)
Hydraulic pump requirements	(8-12) gallons per minute, 5 h.p., 200 volt (3) phase 20 gallon reservoir @ 1,500 psi
Minimum Clearance	19” (482.6 mm)
Head Length	19-3/4” (501.7 mm) 12” (305 mm) w/ R. A. drive
Working Weight	145 lbs. (66 kg)
Shipping Weight	290 lbs. (132 kg)
Shipping Dimensions	38” x 20” x 20” (965 mm x 508 mm x 508 mm)
Manufacturer reserves the right to change specifications without notice.	

U.S. Patent 6,994,002